

Sik we i mekem frut mo rus blong Popo i roten (Papaya Phytophthora) (152)

Samari

- Oli faenem olbaot long wol. Long ol kokonas, kakao, avokado, lemon mo bredfrut, popo mo plante moa. Hemi wan rabis sik, i moa was long ol graon we i gat tumas wota long hem long ol hae tempereja.
- Bigfala eria we i roten long ol smol frut wetem waet ringwom we i gro long hem, mo i stap muv i go antap. Hemia i afektem tu ol lif mo frut. Ol stamba oli roten tru long ol lif mo ol mak we i kamaot long ol frut. Ol rus we i roten i mekem se ol lif i slak.
- Hemi spred tru long ren splash, win, graon we i stap long olgeta masin, mo graon wota.
- **Kontrolem wetem fasin blong faming:** impruvum drenej – leftemap level blong graon blong plan long hem; putum ol ded lif blong blokem wota we i splash; karemaot o bonem ol frut mo stamba we oli sik; jensem ol krop evri 4 yia.
- **Kontrolem wetem kemikol:** *chlorothalonil*, *copper*, *mancozeb* (oli protektem ol plant); o stap jenisim wetem *metalaxyl* o *phosphorous acid* (folem sistem ia).

Komon nem: *Papaya fruit mo root rot, Phytophthora fruit rot*

Saentifik nem: *Phytophthora palmivora*. Yu mas save se, *Phytophthora nicotianae* nao i mekem sik ia, eksampol: long Australia mo Fiji. *Fact sheet* ia i wantem soem se ol saen mo manejmen blong tugeta i semak nomo.



Photo 1. Papaya fruits infected by *Phytophthora palmivora*. Note the white cottony growth of the water mould, and that the disease is spreading from the older, lower, fruits upwards.

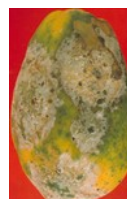


Photo 2. Close-up of a papaya fruit showing the cottony growth of fruit rot, *Phytophthora nicotianae*, identical in appearance to that caused by *Phytophthora palmivora* (Photo 1).



Photo 4. Lower stem or "foot" rot on papaya caused by *Phytophthora palmivora*.



Photo 5. Stem rot on papaya caused by *Phytophthora palmivora*.



Photo 6. Root rot and/or basal stem rot caused by *Phytophthora palmivora*, resulting in a wilt and rapid death of the trees.



Photo 3. Tree shown in Photo 3 with basal stem rot caused by *Phytophthora palmivora*.

Copyright © 2023. All rights reserved.



Australian Government
Australian Centre for
International Agricultural Research



Web edition hosted at <https://apps.lucidcentral.org/pppw>