

Sik we i spolem Pinat (Peanut southern blight) (011)

Samari

- Oli faenem olbaot long wol. Long karot, ol bin, kukamba, pamkin, melon, kapsikum, pinat, kumala, taro, wota taro mo ol narafala flaoa plant, tomato mo rabis gras. Hemi wan rabis sik.
- Ringwom ia i atakem ol frut we oli planem antap mo andanit long graon, i gro i go stret insaed o tru long ol ples we i gat wan kat long hem, i mekem lif i slak. Bitwin ol krop we oli planem, hemi laef long ol toti blong plant, o olsem wan waet mo strong raon samting we oli kolek 'sclerotia'.
- Hemi spred i go olbaot taem se ringwom i gro tru long graon; long longfala ples taem we yumi karem ol plant we sik i stap long olgeta i go long wan narafala ples.
- **Kontrolem wetem fasin blong faming:** no plan long sem ples o mekem krop roteisen, yusum ol plant we i had blong sik i kasem olgeta olsem banana, yam, maniok, kon; jekem ples we yu plan long hem; no plan long ol ples we sik i bin afektem ol frut long hem; putum lemon mo sakem korel; karemaot ol plant we i gat sik *sclerotia*; kolektem mo bonem ol toti afta long havest; digim graon i go daon olgeta blong plan.
- **Kemikol kontrol:** oli no rekomendem wan.

Komon nem: *Southern blight, Athelia wilt*

Saentifik nem: *Athelia rolfsii*, hemi seksuol stej blong ringwom. Oli singaotem tu olsem *Sclerotium rolfsii* we hemi aseksuol stej blong hem. Oli no luk tumas seksuol stej blong hem (luk long daegram).



Photo 1. Cottony growth of *Athelia rolfsii* at the base of a peanut plant causing leaves to wilt.



Photo 2. Wilt of sweetpotato cutting soon after planting caused by *Athelia rolfsii*.



Photo 3. Cottony growth of *Athelia rolfsii* on a peanut stem, with many light brown mature sclerotia, and others developing.



Photo 4. Roots and base of the stem of capsicum plants attacked and destroyed by southern blight, *Athelia rolfsii*.

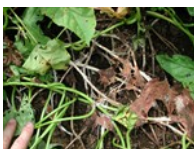


Photo 5. Cottony growth of *Athelia rolfsii* on mature vines of sweetpotato.



Photo 6. Roots of *Alocasia* attacked and killed by *Athelia rolfsii* causing the plant to fall over.

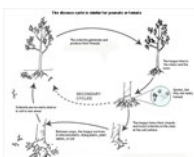


Diagram. Life cycle of *Athelia rolfsii*.



Australian Government
Australian Centre for
International Agricultural Research



Web edition hosted at <https://apps.lucidcentral.org/pppw>