

## Sik we i spolem rus blong kabis (Bele (Abelmoschus) Phytophthora wilt) (149)

### Samari

- Oli faenem olbaot long wol. Long aelan kabis (aibka, sliperi kabis, aelan kabis, *Abelmoschus Manihot*), tomato (luk **Fact Sheet no. 157**) mo hemi atakem tu ol kapsikam, lemon, popo, pasenfrut (luk **Fact Sheet no. 154**) mo paenapol. Hemi wan wota mold, wan *oomycete*, i no wan fangas. Olgeta lif blong kabis bambae oli slak moa long graon we i gat tumas wota long hem.
- Hemi spred tru long ren splash, graon wota, graon we i stap long olgeta masin mo sus, samtaem long graon we i stap long olgeta katings mo hortikaljarol tred.
- Hemi laef tru long olgeta tik-wal spo (*spores*). Olgeta narafala kaen spo (*spores*) oli save infektem mo mekem se olgeta rus oli roten we i mekem olgeta plan oli save slak.
- Kontrolem wetem fasin blong plan: leftemap level blong graon blong plan long hem mo mekem rod blong wota; karemaot olgeta plan we oli nogud finis wetem graon we i stap long rus. No plan long olgeta ples we yu bin plan festaem long hem wetem olgeta kaen plant olsem popo, pasenfrut, paenapol mo okra. No mekem kating long olgeta plant we oli nogud finis, mekem 4 yia krop roteisen.
- **Kontrolem wetem kemikol:** Oli no rekomendem wan.

**Komon nem:** Bele *Phytophthora* wilt

**Saentifik nem:** *Phytophthora nicotianae*; fastaem oli singaotem *Phytophthora nicotianae* pv. *parasitica*.



Photo 1. Bele wilt, caused by the water mould, *Phytophthora nicotianae*, attacking the roots.



Photo 2. Bele wilt, *Phytophthora nicotianae*, showing the death of the young shoot at the top of the plant.

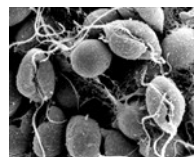


Photo 3. Highly magnified photo of zoospores of *Phytophthora nicotianae*, showing the whip-like hairs used for movement (each zoospore has two).



Photo 4. Root rot caused by *Phytophthora nicotianae*. Note the lack of roots, and that the lower stem has lost its bark, exposing the wood.



Photo 5. Several plants have lost their leaves and are dying due to root and basal stem rot caused by *Phytophthora nicotianae*.

Copyright © 2023. All rights reserved.



Australian Government  
Australian Centre for  
International Agricultural Research



Web edition hosted at <https://apps.lucidcentral.org/pppw>