

Acronychia peninsularis T.G.Hartley

Family:
Rutaceae

Hartley, T.G. (2013) *Flora of Australia* 26: 109, 582. Type: Mouth of Pascoe R., Cape York Peninsula, Qld, 28 Apr. 1993, D.G.Fell 3132A & W.Butcher.

Stem

Seldom exceeding 30 cm dbh. Bark brown. Outer blaze very dark red. Blaze odour resembling that of carrots (*Daucus carota*).

Leaves

Leaflet blades about 4.5-10 x 2-4 cm. Stalk of the middle leaflet longer than those of the lateral leaflets. Lateral veins curving and forming loops inside the blade margin. Oil dots numerous and closely spaced, visible with a lens if not visible to the naked eye. Flat glands usually visible on the underside of the leaf blade.

Flowers

Flowers produced on the twigs below (behind) the leaves. Flowers about 10-11 mm diam. on a pedicel about 3 mm long. Calyx lobes very small and inconspicuous. Petals about 7-8 x 1.2 mm with a line of hairs down the middle on the inner surface. Stamens eight, dimorphic, four alternating with the petals and four opposite the petals. Four filaments about 4.5-7 mm long and four filaments about 3-6 mm long. Filaments hairy, at least the basal half. Anthers about 1.5 x 1 mm on long filaments and about 1.5 x 0.5 mm on short filaments. Ovary about 1 mm long, seated on a disk. Style about 3.5-7 mm long, hairy, at least the basal half.

Fruit

Fruits about 10-12 mm long. Seeds about 3-4 mm long. Aril white or translucent surrounding the shiny black seed. Testa +/- rugose and tuberculate.

Seedlings

Cotyledons elliptic to obovate, about 7-13 x 4-8 mm, margins crenate, oil dots mainly marginal, venation difficult to distinguish. First pair of leaves ovate to elliptic, obtuse at the base, margins toothed, oil dots visible with a lens. At the tenth leaf stage: leaf blade elliptic, apex acute, base cuneate, margin crenate with 9-13 teeth on each side. Lateral veins about 9 on each side of the midrib, curving and forming loops inside the blade margin. Midrib raised on the upper surface of the leaf blade. Seed germination time 145 days.

Distribution and Ecology

Endemic to Australia, occurs in CYP and the northern part of NEQ. Altitudinal range from sea level to 50 m. Grows as an understory tree in monsoon forest and drier, more seasonal rain forest.

Synonyms

Acronychia sp. **Batavia Downs** (J.R.Clarkson 8511) . *Acronychia* sp. (=GS/1329).

RFK Code

643



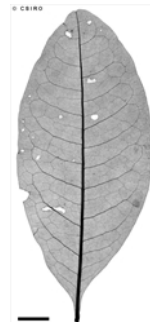
Flowers. © CSIRO



Leaves and Flowers. © CSIRO



Leaves and fruit. © CSIRO



Scale bar 10mm. © CSIRO



Cotyledon stage, epigeal germination. © CSIRO



10th leaf stage with cotyledon still present. © CSIRO

