

# *Amaranthus interruptus* R.Br.

## Family:

**Amaranthaceae**

Brown, R. (1810) *Prodromus Florae Novae Hollandiae* : 414. Type: v.v.

## Common name:

Native Amaranth

## Stem

Decumbent to erect herb 20-60 cm tall.

## Leaves

Petioles grooved on the upper surface, 5-10 mm long. Leaf blades 10-27 x 7-16 mm, smaller towards the apex of the plant; underside of the leaf blade sparsely clothed in dark brown hairs.

## Flowers

Inflorescence 6-8 mm long. Flowers small, about 1 x 0.5 mm, each subtended by a bract about 1.25 cm long. Perianth consists of 3 tepals fused only near the base. Anthers about 1.5 mm long, filaments 1-1.25 mm long. Pollen cream. Ovules solitary in each ovary.

## Fruit

Fruits about 2 mm long with the styles persistent at the apex and perianth lobes persistent at the base. Fruits split along the equator. Seeds about 1 mm diam. Embryo white, C-shaped.

## Seedlings

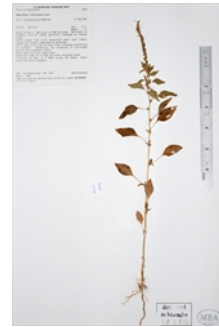
Features not available.

## Distribution and Ecology

Occurs in WA, NT, CYP, NEQ and CEQ, in all states except Victoria. Grows in vine thicket and monsoon forest on red stony basaltic soil, also in sandy and gravelly soil on rocky slopes and in riverbeds.

## RFK Code

4016



Herbarium specimen. © DERM

Copyright © CSIRO 2020, all rights reserved.



Web edition hosted at <https://apps.lucidcentral.org/rainforest>