

## *Callicarpa caudata* Maxim.

### Family:

Lamiaceae



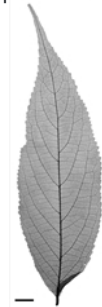
Maximowicz, C.J. (1887) *Bulletin de l'Academie Imperiale des Sciences de Saint-Petersbourg* 31: 76. Type: Philippines, Cuming 1095; holotype: PNH?

### Stem

Usually flowers and fruits as a shrub about 2-4 m tall.

### Leaves

Twigs and petioles clothed in simple, tortuous, erect hairs. Leaf blades about 12-19 x 3-6 cm. Upper leaf blade surface clothed in simple hairs. Underside of the leaf blade clothed in stellate hairs. Leaf blade margins toothed from the base to the apex, each tooth ending in a mucronate tip. Apex long and tapering gradually to the tip.



Scale bar 10mm. © CSIRO

### Flowers

Primary peduncles longer than the petioles. Calyx about 1-1.5 x 1 mm, cup-shaped, minutely 4-toothed, glandular and with long simple hairs on the outer surface. Corolla glabrous, about 2 mm long. Ovary globose, glandular all over the outer surface. Style filiform, exserted, about 4 mm long.

### Fruit

Fruit globular, glabrous, glandular, about 2 mm diam. Calyx persistent at the base. Seeds enclosed in a hard, tough endocarp which is quite difficult to cut.

### Seedlings

Features not available.

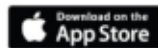
### Distribution and Ecology

Occurs in NEQ. Altitudinal range not known but probably from near sea level to 300 m. Grows as an understory plant in disturbed lowland rain forest. Also occurs in Malesia.

### RFK Code

3244

Copyright © CSIRO 2020, all rights reserved.



Web edition hosted at <https://apps.lucidcentral.org/rainforest>