

## *Desmos goezeanus* (F.Muell.) Jessup

### Family:

Annonaceae

Jessup, L.W. (1984) *Austrobaileya* 2(3): 227.

### Stem

Grows into a tree-top vine, stem diameters to 5 cm recorded. Vascular rays are fairly obvious in the wood but are more obvious in the bark. Blaze marked by pale granular stripes and brown fibrous stripes.

### Leaves

Leaf blades glaucous on the underside, about 6.5-15 x 2-5 cm, petioles about 0.3-0.6 cm long, base encircled by a ring of hairs. Lateral veins not very obvious, about 20-25 on each side of the midrib. Oak grain in the twigs. Oil dots small, visible with a lens from the upper surface. Crushed leaves emit a faint sweet odour. Tendrils are modified branches.

### Flowers

Flowers large, about 3-3.5 cm diam., emitting an odour resembling amyl acetate? (bananas?), pedicels about 4-5 cm long with a sepal-like bract (8-15 x 4-5 mm) halfway along the pedicel. Sepals about 10-17 x 8 mm. Petals three + three in two whorls. Petals of the outer whorl about 4-5.5 x 2.3-3 cm, petals of the inner whorl about 3.2-3.6 x 1.5-2 cm. Stamens numerous, about 100 per flower, anthers sessile, each anther about 1-2 mm long. Pollen white or colourless. Carpels hairy, 30-40 per flower, each carpel about 2-3 mm long. Stigma sessile, cerebriiform. Ovules about six per carpel.

### Fruit

Each fruiting carpel on a stalk about 8-10 mm long. Carpels about 7.5-8 cm long divided into 3-8 segments linked end to end to form a chain, each segment about 9-11 mm long containing a single seed. Seeds about 9-10 x 5-6 mm. Endosperm hard. Embryo embedded in the endosperm. Embryo about 1.5 mm long consisting mainly of cotyledons, the radicle being minute.

### Seedlings

First leaves broadly lanceolate or elliptic, apex acute, base obtuse. Oil dots dark-coloured, visible with a lens, midrib depressed on the upper surface. At the tenth leaf stage: leaf blade oblong to elliptic, apex acute, base obtuse, underside white. Very fine hairs visible along the midrib on the underside of the leaf blade. Oil dots dark-coloured, numerous, visible with a lens. Seed germination time 109 to 110 days.

### Distribution and Ecology

Endemic to NEQ. Altitudinal range from near sea level to 1000 m. Grows in well developed lowland, upland and mountain rain forest on a variety of rock types.

### Natural History & Notes

Food plant for the larval stages of the Fourbar Swordtail Butterfly. Sankowsky & Neilsen (2000).

Food plant for the larval stages of the Pale Green Triangle Butterfly. Common & Waterhouse (1981).

### Synonyms

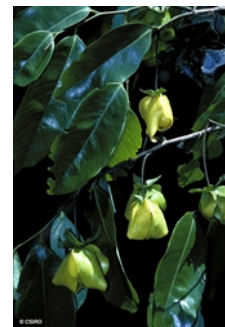
*Uva goezeana* (F.Muell.) Kuntze, *Revisio Generum Plantarum* 1: 8(1891). *Uvaria goezeana* F.Muell., *Fragmenta Phytographiae Australiae* 7: 125(1869), Type: In montibus sinui Rockingham Bay vicinis; J. Dallachy. *Unona queenslandica* Domin, *Bibliotheca Botanica* 89(4): 670(1928), Type: Nordost-Queensland: in den Regenwaldern bei Harveys Creek nicht selten, auch in der Nahe des Lake Eacham (DOMIN I, II. 1910).

### RFK Code

2041



Leaves and Flowers. © CSIRO



Leaves and Flowers. © CSIRO



Fruit and seed. © W. T. Cooper



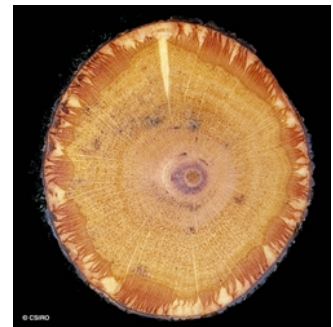
Scale bar 10mm. © CSIRO



Cotyledon stage, durian germination. © CSIRO



10th leaf stage. © CSIRO



Vine stem transverse section. © CSIRO

