

Dianella pavopennacea var. *major* R.J.F.Hend.

Family:

Hemerocallidaceae

Henderson, R.J.F. in George, A.S. (1987) *Flora of Australia* 45: 482. Type: cultivated Royal Botanic Gardens, Sydney, N.S.W., (from transplants from between Pascoe and Wenlock rivers near Wenlock, northern Qld, coll. J.T.Waterhouse, 1974), A.N.Rodd 2702; holo: BRI; iso: NSW.



Stem

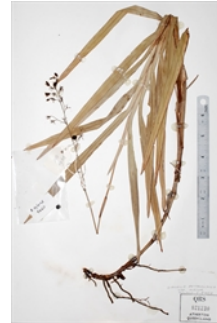
Plants forming dense stands of several square metres. Stems up to 60 cm long, erect or sigmoidally spreading.

Leaves

Leaves clustered towards the apex of the stems, 30-55 cm long; lamina 30-40 x 0.8-1.5 cm, petioles about 6-7 cm long; keel smooth.

Flowers

Inflorescence exceeding leaves. Cymules progressively contracting outwards, 5-20 -flowered. Perianth segments sky blue to purple, 4.5-7 mm long. Sepals 5-7 -nerved. Petals 3-4 -nerved. Anthers yellow-green to reddish brown, 2.5-3.5 mm long, filament swelling yellow. Style 3-4 mm long.



Herbarium specimen. © CSIRO

Fruit

Fruit a berry 5-8 mm long. Seed 2.8-3.9 mm long, testa minutely areolate, glossy black.

Seedlings

Features not available.

Distribution and Ecology

Occurs in CYP, the northern part of NEQ, and a with a single record southwest of Townsville. Altitudinal range from near sea level to 475 m. Grows in rainforest margin, open Eucalypt forest, vineforest, Eucalypt woodland, Melaleuca woodland and in heathland near the coast.

RFK Code

4065

Copyright © CSIRO 2020, all rights reserved.



Web edition hosted at <https://apps.lucidcentral.org/rainforest>