

Endiandra cowleyana F.M.Bailey

Family:
Lauraceae

Bailey, F.M. (1892) *Queensland Department of Agriculture and Stock. Botany Bulletin* 5: 23. Type: South coast, Barron River, F. Cowley 42, holotype: BRI; isotype: BM, K.

Common name:
Northern Rose Walnut; Rose Walnut; Walnut, Rose; Walnut, Northern Rose

Stem

A thin cream or pale brown layer usually visible beneath the subrhynchium layer before the first section of the outer blaze.

Leaves

Twigs terete or fluted, clothed in straight, appressed, pale brown hairs. Leaf blades about 5.5-9 x 2-4 cm, green on the underside, sometimes slightly glaucous, glabrous or clothed in straight, appressed, pale brown hairs. Foveoles conspicuous, usually 1-4 per leaf, occasionally up to 11 or 12. Midrib raised or flush with the upper surface. Petioles flat or channelled on the upper surface. Oil dots visible with a lens.

Flowers

Flowers opening quite widely, the tepals sometimes becoming +/- horizontal at anthesis. Tepals about 0.8-1.4 mm long. Staminal glands six, free from one another. Staminodes three, differentiated into a head and stalk.

Fruit

Fruits ellipsoid, about 24-33 x 14-17 mm. Seed about 20-28 x 12-15 mm. Cotyledons cream.

Seedlings

First pair of leaves about 60-80 x 22-30 mm, green on the underside. At the tenth leaf stage: leaves narrowly elliptic, apex long acuminate, base attenuate, glabrous; foveoles sometimes present on the undersurface; oil dots numerous, readily seen with a lens.

Distribution and Ecology

Endemic to Queensland, occurs in CYP, NEQ and CEQ. Altitudinal range from sea level to 1000 m. Grows in well developed rain forest on a variety of sites.

Natural History & Notes

This species produces millable logs and the sawn timber is marketed as Northern Rose Walnut, a useful general purpose timber. Wood specific gravity 0.72-0.77. Hyland (1989).

RFK Code

113



Flower. © Barry Jago



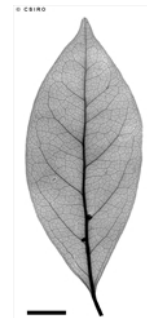
Flower and buds. © Barry Jago



Fruit, side views, cross section and seed. © W. T. Cooper



Leaves and Flowers. © CSIRO



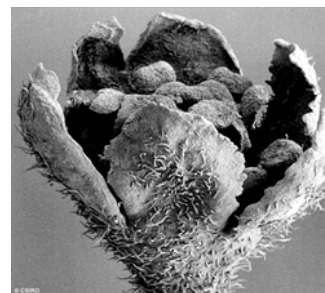
Scale bar 10mm. © CSIRO



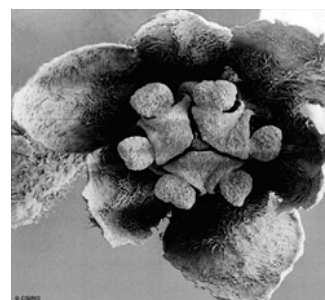
10th leaf stage. © CSIRO



Cotyledon stage, hypogeal germination. © CSIRO



Flower, oblique view, hairy tepals, anther tips & anther valves. © CSIRO



Flower, bird's-eye view, tepals, anthers (3) & anther valves (6). © CSIRO

