

Endiandra grayi B.Hyland

Family:

Lauraceae

Hyland, B.P.M. (1989) *Australian Systematic Botany* 2: 231. Type: B. Gray 3305, Portion 188, Parish of Alexander, 12 vii 1882 (QRS, holotypus).

Stem

Buttresses usually well developed, often convex in outline particularly on the larger trees. White longitudinal stripes normally visible in the outer blaze.

Leaves

Twigs fluted and densely clothed in tortuous hairs when young but eventually becoming almost glabrous. Leaf blades about 11.5-14.5 x 3.5-5 cm, glaucous on the underside, clothed in tortuous, erect, brown or rusty brown hairs when young but eventually becoming almost glabrous. Midrib depressed on the upper surface. Petioles flat or channelled on the upper surface. Oil dots visible with a lens.

Flowers

Flowers opening quite widely but the tips of the tepals remaining erect at anthesis. Tepals about 3.3-5.1 mm long. Staminal glands fused to form a disk or continuous ring of tissue around the ovary. Staminodes absent or not distinct from the disk.

Fruit

Fruits ellipsoid, globular or ovoid, sometimes laterally compressed, about 50-65 x 35-50 mm. Seeds about 40-54 x 27-38 mm. Cotyledons cream.

Seedlings

First pair of leaves narrowly elliptic, about 85-140 x 37-55 mm, glaucous on the underside. At the tenth leaf stage: leaf blade ovate to elliptic, apex acuminate, glaucous on the underside, hairy on both the upper and lower surfaces mainly along the midrib and lateral veins; oil dots visible with a lens; petiole and stem densely clothed in reddish brown tortuous hairs. Seed germination time 34 to 86 days.

Distribution and Ecology

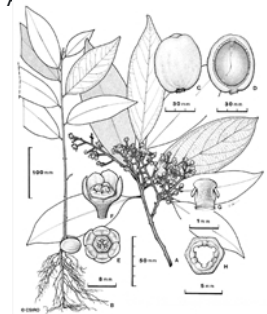
Endemic to NEQ, restricted to the area between the Daintree River and Cape Tribulation. Altitudinal range from sea level to 40 m. Grows in well developed lowland rain forest.

Natural History & Notes

This species grows large enough to produce millable logs. Wood specific gravity 1.00. Hyland (1989).

RFK Code

824



Habit, flower, anther, disk, fruit, seedling. © CSIRO



Scale bar 10mm. © CSIRO



Cotyledon stage, hypogeal germination. © CSIRO



10th leaf stage. © CSIRO



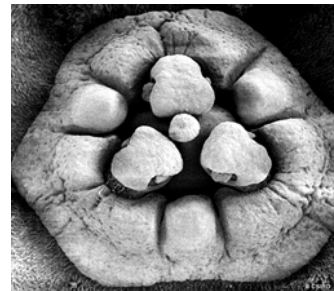
Cotyledon and 1st leaf stage, hypogeal germination. © CSIRO



10th leaf stage, cotyledons still attached, hypogeal germination. © CSIRO



Flower, oblique view Tepals, lobed disk, three anthers & stigma. © CSIRO



Bird's-eye view Disk, three anthers & a central stigma. © CSIRO

