

Endiandra hypotephra F.Muell.

Family:

Lauraceae

Mueller, F.J.H. von (1865) *Fragmenta Phytographiae Australiae* 5: 166. Type: Rockingham Bay, Meunga Creek, L. Dallymmer Islet, MEL, fide Hyland (1989).

Common name:

Walnut, Rose; Walnut, Blue; Rose Walnut; Northern Rose Walnut; Blue Walnut; Walnut, Northern Rose

Stem

A thin cream or pale brown layer normally present beneath the subrhynchium layer before the first section of the outer blaze.

Leaves

Twigs terete or fluted, clothed in straight and tortuous, erect, pale brown hairs. Leaf blades about 3.5-14 x 2.5-5.5 cm, glaucous on the underside, clothed in straight and tortuous, erect, pale brown hairs. Midrib depressed on the upper surface. Midrib and main lateral veins hairy on the upper surface of young leaf blades. Petiole flat or channelled on the upper surface. Oil dots visible with a lens.

Flowers

Flowers opening quite widely but the tepals usually not horizontal at anthesis. Tepals about 3.5-6 mm long. Staminal glands fused to form a disk or continuous ring of tissue around the ovary. Staminodes absent or not distinct from the disk.

Fruit

Fruits ellipsoid, about 20-28 x 12-16 mm. Seed about 17-25 x 9-12 mm. Cotyledons pink, red or purplish.

Seedlings

First pair of leaves ovate, lanceolate or elliptic, about 40-85 x 20-30 mm, glaucous on the underside. At the tenth leaf stage: leaves elliptic, apex abruptly acuminate, hairy on the upper surface along the midrib and main lateral veins; oil dots small, visible with a lens; petiole and stem densely clothed in rusty brown hairs. Seed germination time 25 to 40 days.

Distribution and Ecology

Endemic to Queensland, occurs in NEQ and CEQ. Altitudinal range from sea level to 650 m. Grows as an understory tree in lowland and upland rain forest on a variety of sites.

Natural History & Notes

Fruit eaten by Cassowaries and Fruit Pigeons. Cooper & Cooper (1994).

This species has no commercial value as it seldom grows large enough to produce millable logs. Wood specific gravity 1.04. Hyland (1989).

RFK Code

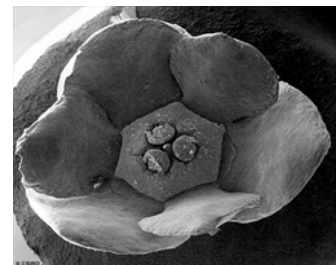
195



Flowers. CC-BY J.L. Dowe



Flowers. © Barry Jago



Flower, bird's-eye view, tepals, disk & 3 anthers. © CSIRO



Flowers. © B. Gray



Fruit, three views, cross sections and seed. © W. T. Cooper



Leaves and flowers. © B. Gray



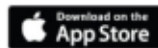
Scale bar 10mm. © CSIRO



10th leaf stage. © CSIRO



Cotyledon stage, hypogeal germination. © CSIRO



Web edition hosted at <https://apps.lucidcentral.org/rainforest>