

Endiandra impressicosta C.K.Allen

Family:
Lauraceae



Allen, C.K. (1942) *Journal of the Arnold Arboretum* 23: 151. Type: British New Guinea: Middle Fly River, Lake Daurumbu, Papua New Guinea. 7619 (type, AA) .. Aug. 1936;.

Common name:
Sunken Nerve Walnut; Steelbutt

Stem

A thin pale brown layer generally visible beneath the subrhynchium layer before the first section of the outer blaze. Blaze usually conspicuously layered and rather hard to cut.

Leaves

Twigs terete or fluted, glabrous, clothed in straight, appressed, pale brown hairs when very young. Leaf blades about 7.5-14.5 x 4-8 cm, green on the underside, glabrous, very sparsely scattered, straight, appressed, pale brown hairs present on very young leaves. Lateral veins forming loops well inside the blade margin, sometimes tending to form a double series of loops. Young leaves bright red. Midrib depressed on the upper surface. Petioles channelled on the upper surface. Oil dots visible with a lens.

Flowers

Flowers opening widely, the outer tepals eventually becoming horizontal or reflexed. Tepals about 3.2-4.4 mm long. Staminal glands absent. Staminodes absent.

Fruit

Fruits ellipsoid, about 45-60 x 30-37 mm. Seed about 38-47 x 20-27 mm. Cotyledons cream.

Seedlings

First pair of leaves narrowly elliptic or ovate, about 75-135 x 25-42 mm, green on the underside. At the tenth leaf stage: leaves narrowly elliptic, glabrous; oil dots small, visible only with a lens. Seed germination time 24 to 42 days.

Distribution and Ecology

Occurs in CYP and NEQ. Altitudinal range from sea level to 500 m. Grows in various rain forests but tends to be more abundant in the drier or more seasonal rain forests. Also occurs in New Guinea.

Natural History & Notes

This species grows large enough to produce millable logs but is seldom utilized for sawn timber. The wood is quite hard and very abrasive to mechanical tools. Wood specific gravity 0.95-1.10. Hyland (1989).

RFK Code

482



Flowers. © CSIRO



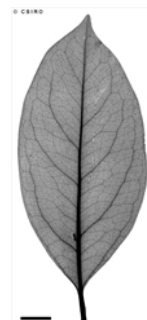
Flower. © Barry Jago



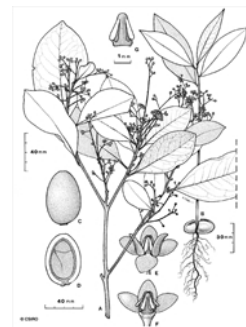
Leaves and Flowers. © CSIRO



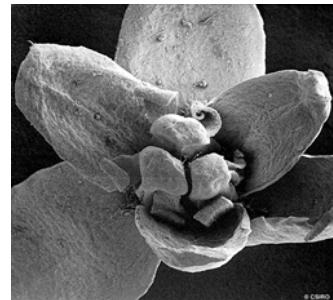
Leaves and fruit. © CSIRO



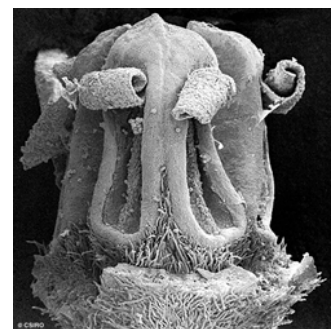
Scale bar 10mm. © CSIRO



Habit, flower, stamen, fruit, seedling. © CSIRO



Flower, bird's-eye view, tepals, anthers and rolled up valves. © CSIRO



Flower, side view, anthers with rolled up valves. © CSIRO



10th leaf stage. © CSIRO



Cotyledon and 1st leaf stage, hypogeal germination. © CSIRO



Cotyledon stage, hypogeal germination. © CSIRO



Cotyledon and 1st leaf stage, hypogeal germination. © CSIRO



Web edition hosted at <https://apps.lucidcentral.org/rainforest>