

Endiandra jonesii B.Hyland

Family:
Lauraceae

Hyland, B.P.M. (1989) *Australian Systematic Botany* 2: 236. Type: B. Hyland 7755: State Forest Reserve 442, South Maryborough Logging Area, 10.x.1974 (QRS, holotypus).

Stem

Blaze odour usually noticeable, somewhat pine-like (*Pinus* spp.). A thin cream or pale brown layer normally visible under the subrhynchium layer before the first section of the outer blaze.

Leaves

Twigs terete or fluted, clothed in straight, appressed, white or pale brown hairs when young but +/- glabrous at maturity. Leaf blades about 5-8.7 x 1.5-2.6 cm, green or slightly glaucous on the underside, clothed in straight, appressed, pale brown hairs when young, sometimes becoming almost glabrous when older. Midrib depressed or flush with the upper surface. Petioles flat or channelled on the upper surface. Oil dots visible with a lens.

Flowers

Flowers opening quite widely, the tepals eventually becoming reflexed at or after anthesis. Tepals about 1.6-2.4 mm long. Staminal glands absent. Staminodes usually present, three, not differentiated into a head and stalk.

Fruit

Fruits ellipsoid to globular but more commonly depressed globular, usually also laterally compressed, about 43-55 x 40-61 x 35-55 mm on the longer and shorter axes. Seed about 32-42 x 25-42 x 29-48 mm. Cotyledons cream or yellowish.

Seedlings

First pair of leaves narrowly elliptic, about 80-105 x 20-30 mm. At the tenth leaf stage: leaves elliptic, glabrous on the upper surface, undersurface sometimes slightly glaucous; oil dots small, numerous, visible with a lens. Seed germination time 33 to 182 days.

Distribution and Ecology

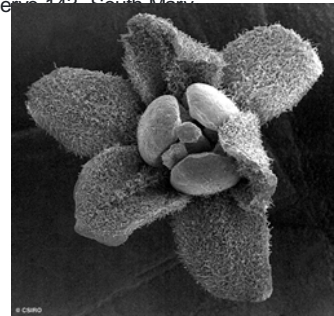
Endemic to NEQ, restricted to the Mt Spurgeon-Mt Lewis area. Altitudinal range from 600-1300 m. Grows in well developed upland and mountain rain forest on soils derived from granite.

Natural History & Notes

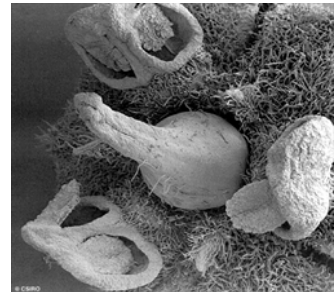
This species grows large enough to produce millable logs but is not utilized. Wood specific gravity 0.80. Hyland (1989).

RFK Code

825



Flower, bird's-eye view, tepals, anthers & stigma. © CSIRO



Flower oblique bird's-eye view, anthers, ovary, style & stigma. © CSIRO



Scale bar 10mm. © CSIRO



Habit, flower, stamen, staminode, fruit, seedling. © CSIRO



Seedling. © CSIRO



Cotyledon stage, hypogeal germination. © CSIRO



10th leaf stage. © CSIRO



Cotyledon stage, hypogeal germination. © CSIRO



Cotyledon and 1st leaf stage, hypogeal germination. © CSIRO



Web edition hosted at <https://apps.lucidcentral.org/rainforest>