

Endiandra monothyra subsp. *trichophylla* B.Hyland

Family:
Lauraceae



Hyland, B.P.M. (1989) *Australian Systematic Botany* 2: 241. Type: B. Gray 1589: State Forest Reserve 310, Gardiner, Queensland, A., 12.xi.1979 (QRS, holotypus).

Common name:
Walnut, Rose; Rose Walnut

Stem

Blaze odour noticeable, difficult to describe, rather aromatic, somewhat like Red Cedar (*Toona ciliata*).

Leaves

Twigs terete or fluted, clothed in tortuous, erect, brown hairs. Leaf blades about 5.5-8.5 x 2-3.5 cm, green on the underside, clothed in tortuous, erect brown hairs which persist even on fully mature leaves. Midrib depressed on the upper surface. Petioles flat on the upper surface. Oil dots visible with a lens.

Flowers

Flowers not opening very widely, the tepals being +/- vertical at anthesis. Tepals about 1-1.2 mm long. Staminal glands six, free from one another. Staminal glands three, usually differentiated into a head and stalk.

Fruit

Fruits ellipsoid, about 35 x 15 mm. Seed about 28 x 12 mm. Cotyledons cream.

Seedlings

First pair of leaves ovate or lanceolate, about 40-65 x 14-27 mm, green on the underside. At the tenth leaf stage: leaves ovate, hairy on the upper surface along midrib and main lateral veins; oil dots small, numerous, visible with a lens; terminal bud, petioles and stem densely clothed in reddish brown hairs. Seed germination time 32 to 36 days.

Distribution and Ecology

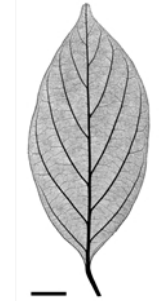
Endemic to NEQ, restricted to the Atherton Tableland and the mountains in its vicinity. Altitudinal range from 650-800 m. Grows in well developed upland rain forest.

Natural History & Notes

This subspecies grows large enough to produce millable logs. Wood specific gravity 0.87. Hyland (1989).

RFK Code

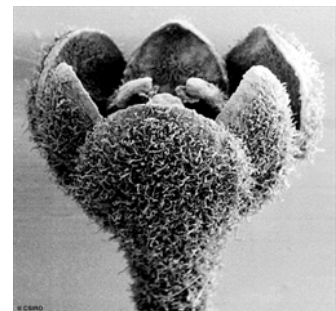
828



Scale bar 10mm. © CSIRO



Cotyledon and 1st leaf stage, hypogeal germination. © CSIRO



Flower, side view Tepals with tortuous hairs & tips of anthers. © CSIRO



Flower, bird's-eye view Tepals & tips of three anthers. © CSIRO



Web edition hosted at <https://apps.lucidcentral.org/rainforest>