

Endiandra xanthocarpa B.Hyland

Family:
Lauraceae



Hyland, B.P.M. (1989) *Australian Systematic Botany* 2: 251. Type: B. Gray 2913: Timber Reserve 1230 Boonjee-Lorraine Area 11.i.1983 (QRS, holotypus).

Stem

A thin cream or pale brown layer generally visible beneath the subrhynchome layer before the first section of the outer blaze.

Leaves

Twigs fluted, clothed in straight, appressed, pale brown hairs when young, glabrous when older, with pale spongy bark. Leaf blades about 9-15.5 x 4-7 cm, rather thick and leathery, green and glabrous on the underside. Midrib usually depressed on the upper surface. Petioles flat or channelled on the upper surface. Oil dots visible with a lens.

Flowers

Flowers scarcely opening, the tepals at anthesis surrounding the style and anthers so that only the stigma and tips of the reddish anthers and their valves are visible. Tepals about 0.7-1 mm long. Staminal glands absent. Staminodes usually two, scarcely differentiated into a head and stalk.

Fruit

Fruits ellipsoid, about 60-70 x 33-45 mm. Seed about 40-72 x 21-36 mm. Cotyledons pale pink.

Seedlings

First pair of leaves ovate, about 110-160 x 43-70 mm, green on the underside. At the tenth leaf stage: leaves ovate, apex shortly acuminate, glabrous on the upper surface; oil dots small, visible with a lens. Seed germination time 35 to 96 days.

Distribution and Ecology

Endemic to NEQ, known only from the Boonjee area on the south-eastern edge of the Atherton Tableland and Babinda. Altitudinal range from 80-750 m. Grows as an understory tree in well developed rain forest on soil derived from basalt.

Natural History & Notes

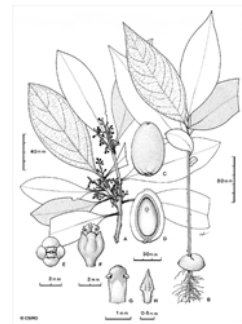
This species sometimes grows large enough to produce millable logs but it has not been utilized to date. Wood specific gravity 0.83. Hyland (1989).

RFK Code

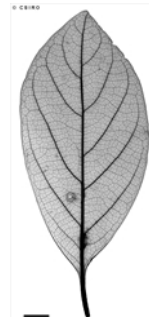
297



Flowers. © Barry Jago



Habit, flower, anther, staminode, fruit, seedling. © CSIRO



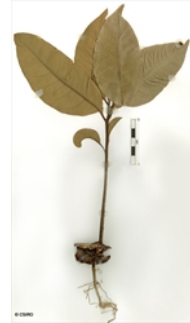
Scale bar 10mm. © CSIRO



Cotyledon stage, hypogeal germination. © CSIRO



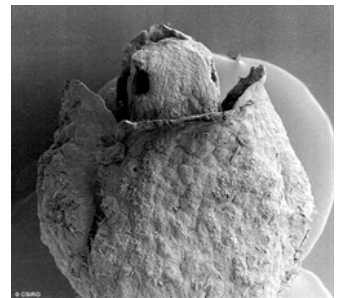
10th leaf stage. © CSIRO



Cotyledon stage, durian germination. © CSIRO



Cotyledon and 1st leaf stage, hypogeal germination. © CSIRO



Flower, side view Tepals & tips of two anthers. © CSIRO



Flower oblique bird's-eye view
Tepals 4, anthers 2, & stigma. ©
CSIRO



Web edition hosted at <https://apps.lucidcentral.org/rainforest>