

Eriachne pallescens R.Br.

Family:
Poaceae

Brown, R. (1810) *Prodromus Florae Novae Hollandiae* : 184.

Stem

Densely tufted perennial with erect, wiry, glabrous and smooth culms, 20-105 cm tall, 5-8-noded, sometimes branched.

Leaves

Leaf sheaths usually shorter than the internodes, papillose-pilose, ciliate along margins and mouth; leaf blades convolute, papillose-pilose, 2-16 cm long and 0.8-3 mm wide; ligule a fringe of short hairs, 0.3-0.6 mm long.

Flowers

Inflorescence an open panicle, 5-15 x 4-9 cm, branches inserted singly, very slender, smooth, glabrous, bearded in the axils and with a dark gland. Spikelets purplish, 4-5.5 mm; glumes green fused purple, ovate-lanceolate, 2-6 mm, 9(-13)-veined, glabrous to finely scabrous, sharply acute; lemmas 3.3-5 mm, with dense white, appressed hairs, apex constricted, bidentate, awn 1.5-8 mm long, erect, rather stout, scabrous, subequal to lemma body; faintly 3-7 -nerved, palea equal to its lemma, dorsally hispid.

Fruit

Caryopsis oblong, 2.3-3.3 mm long, narrowly elliptic, slightly flattened on one side, obtuse, acuminate at base and obtusely convex at front, with parallel lengthwise striations, reddish- or dark-brown.

Seedlings

Features not available.

Distribution and Ecology

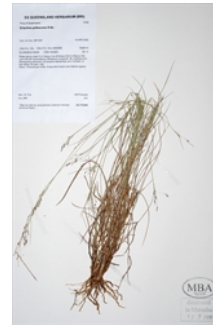
Occurs in the NT, CYP, NEQ, CEQ and southwards to north-eastern New South Wales. Altitudinal range from near sea level to 1050 m. Grows in openings in rainforest, sclerophyll forest, open Eucalypt forest, various types of woodland and heathland mainly on sandy soils. Also in China, India, Indo-China, Malesia, Burma, New Guinea and the Caroline Islands.

Synonyms

Aira effusa Spreng., *Systema Vegetabilium* 1: 278(1824).

RFK Code

4259



Herbarium specimen. © DERM

Copyright © CSIRO 2020, all rights reserved.



Web edition hosted at <https://apps.lucidcentral.org/rainforest>