

# *Ficus congesta* Roxb. var. *congesta*

## Family:

Moraceae

Corner, E.J.H. (1960) *The Gardens' Bulletin Singapore* 18 : 52.

## Common name:

Red Leaf Fig; Fig, Red Leaf; Fig, Cluster; Fig; Cluster Fig

## Stem

Not a strangling fig. Seldom exceeding 30 cm dbh.

## Leaves

Petioles and twigs produce a milky exudate. Leaf blades about 12-25 x 8-13 cm. Oil dots visible on the underside of the leaf blade with the aid of a lens. Stipules about 1-2.5 cm long and hairy on the outside. Bark on the younger twigs rusty, papery, scaly. Bark on the older twigs strong and fibrous when stripped.

## Flowers

Male flowers: Flowers produced around the ostiole, perianth fused to form an operculum rupturing to expose the anther. Female flowers: Perianth fused into a tube without lobes. Style and stigma bright pinkish red. Bracts at the base of the fig, three. Lateral bracts not present on the outside of the fig body.

## Fruit

Figs borne on special leafless branches on the stem and also on the leafy twigs. Figs pedunculate, depressed globular, about 15 x 18 mm. Orifice closed by interlocking apical and internal bracts.

## Seedlings

Cotyledons +/- orbicular, about 2-3 mm long. At the tenth leaf stage: leaf blade elliptic, base obtuse to auriculate, margin crenate on the upper 2/3 of the leaf blade, upper surface with a few pale hairs. Stipules narrowly triangular, sheathing the terminal bud. Seed germination time 17 to 19 days.

## Distribution and Ecology

Occurs in WA, NT, CYP, NEQ and CEQ. Altitudinal range from sea level to 1000 m. Grows in rain forest on a variety of sites. This species is favoured by disturbance and is a typical regrowth species along roads, etc. Also occurs in Malesia and some Pacific islands.

## Natural History & Notes

Fruit eaten by Cassowaries. Cooper & Cooper (1994).

## Synonyms

***Ficus congesta* Roxb.**, *Flora Indica* (ed. Carey) 3: 560(1832), Type: Introduced into the Botanic Garden at Calcutta in 1802, and in 1809. ***Ficus fasciculata* Benth. var. *fasciculata***, *Flora Australiensis* 6: 177(1873). ***Ficus fasciculata* var. *subopposita* Benth.**, *Flora Australiensis* 6: 177(1873), Type: Rockingham bay and Mackay river, Dallachy. ***Ficus setistyla* Warb.**, *Repertorium Novarum Specierum Regni Vegetabilis* 1 : 77(1905), Type: Queensland: Unter-Russell, leg. Diels no. 8497, 6. Juni. 1902. ***Ficus trichostyla* Warb.**, *Repertorium Novarum Specierum Regni Vegetabilis* 1 : 77(1905), Type: Queensland Cairns, leg. Warburg no. 18500. ***Ficus fasciculata* Benth.**, *Flora Australiensis* 6: 177(1873), Type: Queensland. Rockhampton, Fitzroy river, Bowman, Thozet, Dallachy.

## RFK Code

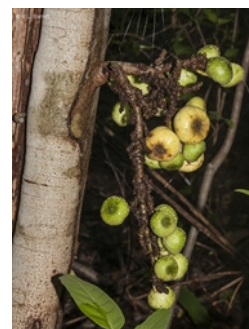
722



Figs. © R.L. Barrett



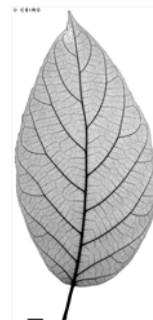
Figs [not vouchered]. CC-BY J.L. Dowe



Trunk and fruiting branch. © R.L. Barrett



Figs, side view, bird's eye view and cross section. © W.T. Cooper



Scale bar 10mm. © CSIRO



10th leaf stage. © CSIRO



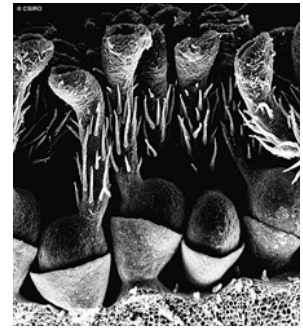
Cotyledon and 1st leaf stage, epigeal germination. © CSIRO



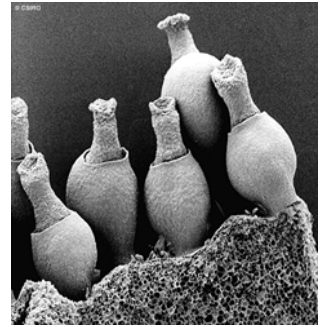
Cotyledon and 1st leaf stage, epigeal germination. © CSIRO



Male flowers, anthers 2-celled. © CSIRO



Female flowers, perianth cupular, style spiny. © CSIRO



Gall flowers, perianth cupular No hairs among flowers. © CSIRO

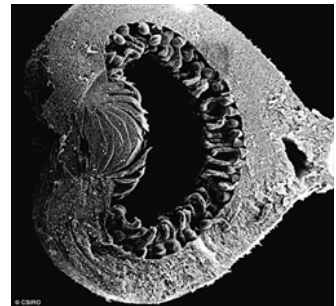


Fig long section, most flowers female, male flowers at apex. © CSIRO



Web edition hosted at <https://apps.lucidcentral.org/rainforest>