

Ficus destruens F.Muell. ex C.T.White

Family:
Moraceae

White, C.T. (1933) *Contributions from the Arnold Arboretum of Harvard University* 4: 16. Type: Gadagamu, Alberton, Tableland, alt. 800 m., S. F. Kajewski 1087, 8 Jun. 1929; holo: BRI.

Common name:
Fig, Boonjee; Fig, Rusty; Strangler Fig; Fig; Fig, Strangler; Rusty Fig; Boonjee Fig

Stem

A strangling fig.

Leaves

Younger leaf blades rusty on the underside. Petioles and twigs produce a milky exudate. Stipules pink, about 2-5 cm long, hairy on the outer surface. Leafy twigs hairy. Leaf blades about 9-18 x 2-6 cm.

Flowers

Tepals glabrous. Male flowers dispersed among the fruitlets in the ripe fig. Bracts at the base of the fig, three. No lateral bracts on the outside of the fig body.

Fruit

Figs with a short thick peduncle, figs +/- globular, about 15 x 12 mm. Orifice a bilabiate slit, closed within the body of the fig by inflexed, but not interlocking, apical and internal bracts.

Seedlings

Cotyledons +/- orbicular, about 3-4 mm long. At the tenth leaf stage: leaf blade lanceolate or ovate, apex acute, margin crenate, with about 2-7 teeth each side, +/- glabrous on the upper surface. Stipules narrowly triangular, sheathing the terminal bud, sometimes with a few reddish hairs. Taproot thickened. Seed germination time 14 to 75 days.

Distribution and Ecology

Endemic to Queensland, occurs in CYP, NEQ and CEQ. Altitudinal range from sea level to 1000 m. Grows in well developed upland and mountain rain forest but sometimes extends outside the rain forest and grows as an epiphyte in eucalypt forest.

Natural History & Notes

Fruit eaten by several species of birds. Cooper & Cooper (1994).

RFK Code

525



Figs [vot vouchersed]. © G. Sankowsky



Figs, side views and cross section. © W. T. Cooper



Leaves and figs [vot vouchersed]. © G. Sankowsky



Leaves and figs [vot vouchersed]. © G. Sankowsky



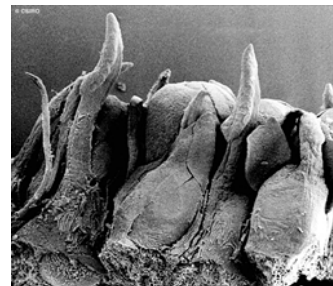
Leaves and figs. © CSIRO



Scale bar 10mm. © CSIRO



Male flowers. © CSIRO



Female flowers(?). © CSIRO



Male flowers, anthers opening on one suture. © CSIRO



Cotyledon and 1st leaf stage, epigeal germination. © CSIRO



10th leaf stage. © CSIRO

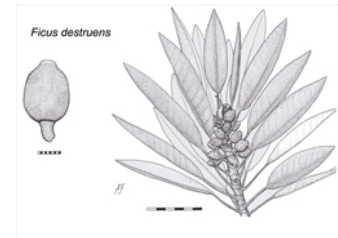
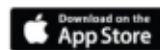


Illustration of fig and branch. © A. Field



Web edition hosted at <https://apps.lucidcentral.org/rainforest>