

Ficus drupacea Thunb.

Family:

Moraceae

Thunberg, C.P. (1786) *Dissertatione Botanica. Ficus* : 6, 11. Type: Southern Asia, C. Thunberg.

Common name:

Fig, Hairy; Fig, Drupe; Fig, Red; Hairy Fig; Red Fig; Drupe Fig

Stem

A strangling fig. Lenticels tend to be in horizontal lines. A hard brown horny layer normally visible in the outer blaze. Exudate rapid and copious.

Leaves

Stipules about 0.8-4.5 cm long, densely clothed in long rusty prostrate silky hairs when young. Petioles and twigs produce a milky exudate. Leaf blades about 10-20 x 4-8 cm. Both surfaces of young leaf blades densely clothed in rusty hairs. Oil dots sometimes visible on the underside of the leaf blade with the aid of a lens.

Flowers

Tepals glabrous. Male flowers scattered at random among the fruitlets in the ripe fig. Bracts at the base of the fig, three. No lateral bracts on the outside of the fig body.

Fruit

Figs sessile, ellipsoid or oblong, about 15-25 x 15-20 mm. Orifice +/- closed by interlocking apical and internal bracts.

Seedlings

Cotyledons oblong to orbicular, about 3-4 mm long. First pair of leaves +/- opposite. At the tenth leaf stage: leaf blade elliptic to ovate, apex acute, base obtuse, upper surface hairy, mainly on the midrib and main lateral veins; oil dots numerous, visible with a lens; petiole densely hairy; stipules triangular, sheathing the terminal bud, hairy. Taproot thickened, carrot-like (*Daucus carota*). Seed germination time 10 to 46 days.

Distribution and Ecology

Occurs in CYP and NEQ. Altitudinal range from sea level to 450 m. Grows in well developed lowland rain forest on a variety of sites. Also occurs in SE Asia, Malesia, the Solomon Islands and other Pacific islands.

Natural History & Notes

Fruits eaten by Fruit Pigeons. Cooper & Cooper (1994).

Synonyms

Ficus drupacea* Thunb. var. *drupacea, *The Gardens' Bulletin Singapore* 17: 380(1960). ***Ficus drupacea* var. *glabrata* Corner**, *The Gardens' Bulletin Singapore* 17: 380(1960), Type: Timor Laut (Moluccas), Forbes 3371; BM. ***Ficus pilosa* Reinw. ex Blume**, *Bijdragen tot de Flora van Nederlandsch Indie* No. 3 : 443(1825), Type: in sylvis altioribus montis Salak (Java). ***Urostigma pilosum* (Blume) Miq.**, *Systematisches Verzeichniss der im indischen Archipel* : 90(1854).

RFK Code

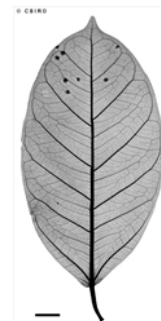
569



Leaves and fruit. © CSIRO



Figs, three views and cross section. © W. T. Cooper



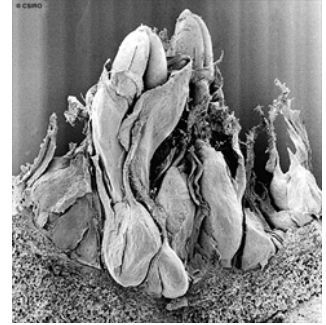
Scale bar 10mm. © CSIRO



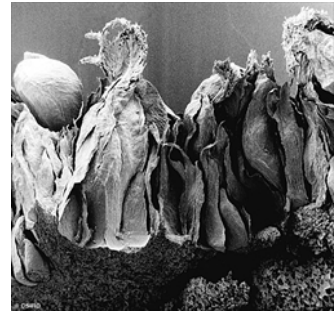
Cotyledon stage, epigeal germination. © CSIRO



10th leaf stage. © CSIRO



Male flowers, anthers 2-celled. © CSIRO



Male flower. © CSIRO

