

# *Ficus opposita* Miq.

Family:  
Moraceae

Miquel, F.A.W. (1848) *Hooker's London Journal of Botany* 7: 426. Type: Hab. in Nova Hollandia, ad Bremer River (a. 1829, Fraser, n. 101! in Hb. Hook.).

Common name:  
Sandpaper Fig; Figwood; Fig; Fig, Sandpaper

## Stem

Not a strangling fig. Seldom exceeding 30 cm dbh. Subrhytidome layer often yellow. Usually grows into a small tree but can flower and fruit as a shrub 1-3 m tall.

## Leaves

Petioles and twigs produce a milky exudate. Leaf blades about 6-14 x 4-6 cm, usually sandpaperly on the upper surface. Stipules about 0.4-1.5 cm long and hairy on the outer surface. Younger leafy twigs and petioles hairy.

## Flowers

Tepals glabrous in male and female flowers but sparsely hairy near the apex in gall flowers. Male flowers produced around the ostiole. Bristles produced between the female and gall flowers. Stigma cylindrical, papillose, style sparsely hairy in the upper half. Bracts at the base of the fig, usually three. Lateral bracts not present on the outside of the fig body.

## Fruit

Figs pedunculate, globular to depressed globular, about 15-20 mm diam., outer surface pubescent, sometimes black and shiny when ripe. Orifice closed by interlocking apical and internal bracts.

## Seedlings

Cotyledons +/- orbicular, about 2-4 mm diam. At the tenth leaf stage: leaf blade elliptic, apex acute, base obtuse to auriculate, margin dentate, teeth on the upper half of the leaf blade, about 10-15 on each side; both the upper and lower surfaces scabrous; stipules linear, glabrous, falling early. Taproot swollen, carrot-like (*Daucus carota*). Seed germination time 11 to 29 days.

## Distribution and Ecology

Occurs in CYP, NEQ, CEQ and southwards as far as south-eastern Queensland. Altitudinal range from sea level to 750 m. Grows in open forest, monsoon forest and beach forest. Also occurs in Malesia.

## Natural History & Notes

Food plant for the larval stages of the Common Moonbeam Butterfly. Common & Waterhouse (1981).

## Synonyms

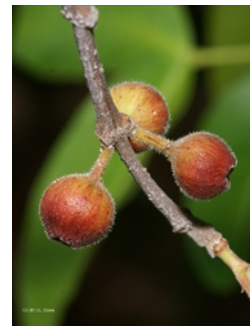
***Ficus opposita* Miq. var. *opposita***, *The Gardens' Bulletin Singapore* 17: 471(1960). ***Ficus opposita* Miq. var. *opposita***, *London Journal Botany* 7: 426(1848), Type: Queensland, Bremer River, 1829, C. Fraser 101. Holo: ?. ***Ficus xerophila* Domin**, *Bibliotheca Botanica* 89(4): 568(1928), Type: Nord-Queensland: Smelling Bluff bei Chillagoe sowie am Chillagoe-Bache; mittelgrosse Baume (DOMIN Feb 1910); nur auf Karstak beobachtet. ***Ficus yarrabensis* Domin**, *Bibliotheca Botanica* 89(4): 569(1928), Type: Nordost-Queensland, Yarrabah, Domin, Jan. 1910. ***Ficus cumingii* Miq.**, *Hook. Lond. Journ. Bot.* 7: 235(1848), Type: Philippines. ***Ficus orbicularis* A. Cunn. ex Miq.**, *London Journal Botany* 7: 426(1848), Type: Not designated. ***Ficus beckleri* Miq.**, *Journal Bot. Neerl.* 1: 241(1861), Type: Northern Territory, Arnhem Land, Fitzmaurice River, Beckler?. ***Ficus cumingii* var. *androbrota* (Summerh.) Corner**, *Gardens' Bulletin. Straits Settlements. Singapore* 17: 458(1960). ***Ficus androbrota* Summerh.**, *Journal of the Arnold Arboretum* 10: 143(1929). ***Ficus fitzalanii* Miq.**, *Journal de Botanique Neerlandaise* 1: 242(1861), Type: Nova Hollandia bor. ad Prom. Cleveland: FITZALAN. ***Ficus aculeata* A. Cunn. ex Miq.**, *London Journal Botany* 7: 426(1848), Type: Not designated.

## RFK Code

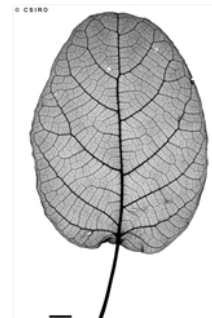
522



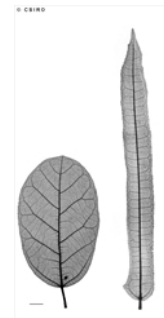
Leaves and figs. © G. Sankowsky



Figs. CC-BY J.L. Dowe



Scale bar 10mm. © CSIRO



Scale bar 10mm. © CSIRO



Male flowers, anthers 2-celled. © CSIRO



Female flowers Note hairs among flowers. © CSIRO

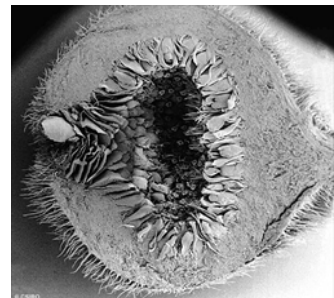


Fig long section, most flowers female Note hairs among flowers. © CSIRO



Female flowers(?). © CSIRO



Cotyledon stage, epigeal germination. © CSIRO



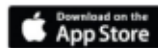
10th leaf stage. © CSIRO



10th leaf stage. © CSIRO



Cotyledon stage, epigeal germination. © CSIRO



Web edition hosted at <https://apps.lucidcentral.org/rainforest>