

Glochidion pungens Airy Shaw

Family:

Phyllanthaceae

Airy Shaw, H.K. (1976) *Kew Bulletin* 31: 349. Type: Qld. Cook District: Main ridge, c. 1 mile (1.4 km) south of Mt. Lewis, alt. 1050 m, 8 Oct 1964, Schodde 4152; holo: BRI.

Common name:

Buttonwood; Pin Flower Tree

Stem

Dead bark layered.

Leaves

Leaf blades about 5-10 x 2.5-4 cm. Midrib slightly raised on the upper surface. Leaf bearing twigs mainly glabrous.

Flowers

Male flowers: Inflorescence without a peduncle or with an exceedingly short peduncle and +/- axillary. Flowers without a disk. Female flowers: Flowers about 2 mm diam., pedicellate. Style narrowly columnar, much exerted at flowering.

Fruit

Capsules not or scarcely lobed, flat or slightly convex at the apex, about 13 mm diam.

Seedlings

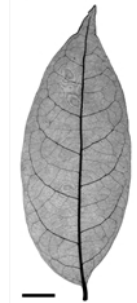
Cotyledons elliptic, about 8-10 mm long. At the tenth leaf stage: leaf blade elliptic, apex acuminate with a short mucro, base cuneate, upper surface glabrous, veins 8-12 each side of the midrib; stipules small, triangular. Seed germination time 38 days.

Distribution and Ecology

Endemic to NEQ, restricted to the Mt Finnigan-Mt Spurgeon-Mt Lewis-Black Mountain area. Altitudinal range from 900-1200 m. Grows in well developed mountain rain forest.

RFK Code

805



Scale bar 10mm. © CSIRO



10th leaf stage. © CSIRO



Cotyledon stage, epigeal germination. © CSIRO



Female flower Note long stout style. © CSIRO



Web edition hosted at <https://apps.lucidcentral.org/rainforest>