

Glochidion sumatranum Miq.

Family:

Phyllanthaceae

Miquel, F.A.W. (1861) *Fl. Ind. Bat. Suppl.* : 450. Type: Sumatra ?.

Common name:

Cheesetree; Pin Flower Tree; Sumatran Buttonwood; Umbrella Cheesetree; Buttonwood

Stem

Dead bark layered.

Leaves

Leaf blades about 7-13 x 2.5-4 cm. Midrib raised on the upper surface. Leaf bearing twigs mainly glabrous.

Flowers

Male flowers: Inflorescence pedunculate, usually supra-axillary. Flowers about 3 mm diam. without a disk. Female flowers: Flowers about 2 mm diam., pedicellate. Styles +/- columnar, slightly exserted at anthesis.

Fruit

Capsules obscurely 10-lobed, flat or concave at the apex, about 7-9 mm diam., resembling a miniature Queensland Blue pumpkin (*Cucurbita pepo*).

Seedlings

Cotyledons elliptic, about 6-8 mm long. At the tenth leaf stage: leaves obovate, apex acuminate, shortly mucronate, base attenuate, glabrous on the upper surface, veins about 5-8 forming loops inside the leaf blade margin; stipules triangular, apex acuminate. Seed germination time 28 to 51 days.

Distribution and Ecology

Occurs in WA, NT, CYP, NEQ, CEQ and southwards as far as north-eastern New South Wales. Altitudinal range from near sea level to 800 m. Favoured by disturbance, grows in a variety of habitats from well developed rain forest to fringing forest along creeks through eucalypt forest. Also occurs in Malesia and the Solomon Islands.

Natural History & Notes

Produces a useful general purpose timber.

Wood specific gravity 0.70. Cause et al. (1989).

Synonyms

***Glochidion supra-axillare* (Benth.) Domin**, *Bibliotheca Botanica* 89(4): 872(1928). ***Glochidion ferdinandi* var. *supra-axillaris* (Benth.) F.M.Bailey**, *The Queensland Flora* 5: 1424(1902).

***Glochidion perakense* var. *supra-axillare* (Benth.) Airy Shaw**, *Kew Bulletin* 31: 349(1976).

***Glochidion perakense* Hook.f.**, *The Flora of British India* 5: 317(1888), Type: PERAK; at South Belang, Kings Collector. ***Phyllanthus ferdinandi* var. *supra-axillaris* Benth.**, *Flora Australiensis* 6: 96(1873), Type: Rockingham Bay, Dallachy; Rockhampton, Thozet, OShanesy.

RFK Code

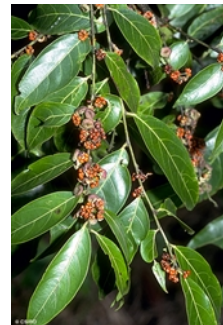
807



Male flower and buds. © Barry Jago



Male flower. © Barry Jago



Leaves and fruit. © CSIRO



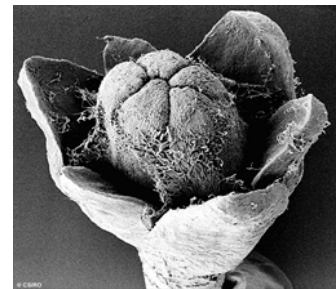
Scale bar 10mm. © CSIRO



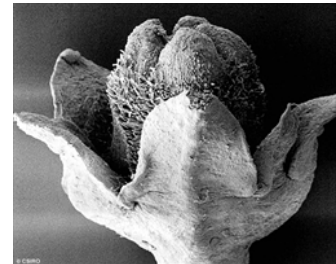
10th leaf stage. © CSIRO



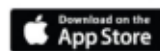
Cotyledon stage, epigeal germination. © CSIRO



Female flower, oblique view. © CSIRO



Female flower, side view. © CSIRO



Web edition hosted at <https://apps.lucidcentral.org/rainforest>