

# *Glochidion xerocarpum* (O.Schwarz) Airy Shaw

**Family:**

**Phyllanthaceae**

Airy Shaw, H.K. (1981) *Muelleria* 4(3): 212.

**Common name:**

Pin Flower Tree

**Stem**

Usually a small tree not exceeding 30 cm dbh.

**Leaves**

Leaf blades about 4-10 x 2-5 cm. Midrib raised on the upper surface. Leaf bearing twigs clothed in short tortuous hairs.

**Flowers**

Male flowers: Inflorescence without a peduncle and strictly axillary. Flowers without a disk. Female flowers: Flowers +/- sessile. Tepals about 2.5-3 mm long. Styles fused to form a hemispherical or button-shaped mass on the top of the ovary.

**Fruit**

Capsules about 10-lobed, flat or concave at the apex, about 15-20 mm diam., resembling a miniature Queensland Blue pumpkin (Cucurbita pepo).

**Seedlings**

Features not available.

**Distribution and Ecology**

Occurs in WA and NT. Altitudinal range from near sea level to about 100 m. Grows in rain forest, monsoon forest or beach forest. Also occurs in Malesia.

**Synonyms**

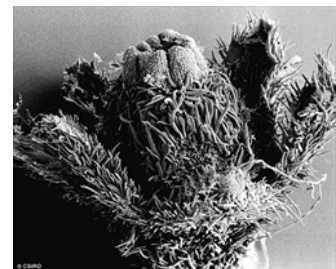
**Phyllanthus xerocarpus** O.Schwarz, *Repertorium Specierum Novarum Regni Vegetabilis* 24 : 87(1927), Type: Port Darwin, Mindel-beach, dry jungle (Bleeser no. 495).

**RFK Code**

873



Scale bar 10mm. © CSIRO



Female flower, side view. © CSIRO

Copyright © CSIRO 2020, all rights reserved.



Web edition hosted at <https://apps.lucidcentral.org/rainforest>