

# *Glossocarya calcicola* Domin

## Family:

Lamiaceae

Domin, K. (1928) *Bibliotheca Botanica* 89(4): 1112. Type: Nord-Queensland: eine bei Chillagoe auf den Karstalkhugeln verbreitete Liane (DOMIN II. 1910), Domin 8516; holo: PR; Domin 8517; iso: PR.



## Stem

Usually grows into a vine but also flowers and fruits as a shrub 2-5 m tall. Vine stem diameters to 4 cm recorded.

## Leaves

Twigs, petioles and both the upper and lower surfaces of the leaf blades clothed in pale, erect, tortuous, short hairs. Leaf blades about 2.5-7 x 1.5-5 cm, petioles about 5-8 mm long. Underside of the leaf blade more densely clothed than the upper surface. 'Oil dots' (?) quite large. Leaf blades glandular, numerous small clear glands visible on the underside. Leaf bearing twigs longitudinally grooved or ridged. Recurved branches assist in climbing.

## Flowers

Outer surface of the calyx and corolla clothed in pale hairs and glands. Calyx about 2.5-3.5 x 1.5-2 mm, 5-toothed at the apex, each tooth about 0.5 mm long. Corolla tube about 4-7 x 1-2 mm, lobes about 2-3 mm long. Stamens exerted, filaments about 4-9.5 mm long, anthers about 0.5-1 mm long. Ovary about 0.5-1 mm long, glandular and densely hairy on the upper half. Style exerted, about 8-12 mm long.

## Fruit

Fruit about 5-8 x 2-3 mm, glandular and hairy on the upper half. Calyx persistent at the base, about 3-5 mm long.

## Seedlings

Cotyledons ovate to elliptic, about 6 x 4 mm. Venation obscure, more obvious on the underside, midrib and 4 other veins radiating from the base. Upper surface more densely and conspicuously hairy than the lower surface. First pair of leaves ovate, margins with 1 or 2 teeth on each side, upper and lower surfaces clothed in pale hairs. Stem and hypocotyl hairy. At the tenth leaf stage: leaf blade ovate, apex mucronate-apiculate, base cordate. Margin deeply toothed or shallowly lobed with 3 or 4 teeth or lobes on each side. Each tooth or lobe ending in an apiculate point. Lateral veins about 5 on each side of the midrib, forming loops just inside the blade margin. Stem and both the upper and lower leaf blade surfaces clothed in pale hairs. Spherical glands visible with a lens on the stem and underside of the leaf blade. Seed germination time 135 days.

## Distribution and Ecology

Occurs in CYP, NEQ, CEQ and southwards to south-eastern Queensland. Altitudinal range from 350-800 m. Grows in monsoon forest and vine thickets frequently on limestone.

## Natural History & Notes

An easily grown species that has horticulture potential. The bunches of white perfumed flowers attract butterflies.

## RFK Code

2087



Leaves and Flowers. © CSIRO



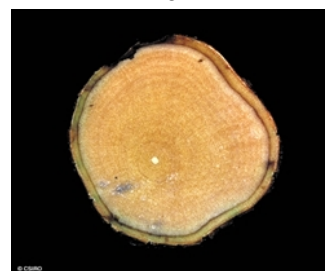
Scale bar 10mm. © CSIRO



Cotyledon stage, epigeal germination. © CSIRO



10th leaf stage. © CSIRO





Web edition hosted at <https://apps.lucidcentral.org/rainforest>