

# *Pavetta granitica* F.Muell. ex Bremek.

## Family:

Rubiaceae

Bremekamp, C.E.B. (1934) *Repertorium Specierum Novarum Regni Vegetabilis* 37: 123. Type: Queensland, Burdekin, Ferd. Mueller s.n.; holotype: K.



## Stem

Usually flowers and fruits as a shrub about 1-5 m tall.

## Leaves

Stipules fused together, tubular, sheathing the stem, apex acuminate. Leaf blades about 9.5-13 x 0.8-2.5 cm, both the upper and lower surfaces hairy. Petioles short, about 0.2-1 cm long. Lateral veins about 6-10 on each side of the midrib.

## Flowers

Pedicels about 1-4 mm long. Calyx lobes reduced to small teeth about 0.5-1 mm long. Corolla tube about 8-15 mm long, hairy on the inner surface, lobes about 5-7 mm long. Anthers about 5-6 mm long. Style about 2.5-3.5 cm long, stigma green, hairy and club-shaped.

## Fruit

Fruits globular or depressed globular, about 5-9 x 8-10 mm, calyx persistent at the apex. Seeds about 4-6 x 3-7 mm. Embryo about 2.5 mm long, cotyledon bases cordate.

## Seedlings

Cotyledons orbicular, about 9-15 mm diam., petiole very short or absent. First pair of leaves elliptic. At the tenth leaf stage: leaf blade obovate, about 65 x 20 mm, +/- sessile, petioles very short, about 3-4 mm long, lateral veins about 5-6, forming loops inside the blade margin. Stipules about 3-6 mm long, fused to one another at the base but the apices free and linear. Seed germination time 18 to 300 days.

## Distribution and Ecology

Probably endemic to Australia, occurs in NEQ and CEQ. Altitudinal range in NEQ from 200-800 m. Grows on rocky outcrops in open forest areas but also found in monsoon forest and vine thickets.

## Natural History & Notes

A well shaped shrub that has white perfumed flowers. This species has a place in gardens in dryer areas.

## Synonyms

*Pavetta tomentosa* Sm., *Rees' Cyclopaedia* 26: n. 2(1814), Type: Sent from India by Dr.

Roxburgh. *Pavetta indica* var. *stenophylla* Domin, *Bibliotheca Botanica* 89(4): 1177(1928), Type: Queensland, ad fl. Gilbert River (DAINTREE) crescit (cf. F. v. MUELLER Fragm. IX. 182, 1875).

*Pavetta modesta* Bremek., *Repertorium Specierum Novarum Regni Vegetabilis* 44: 26(1938), Type: Queensland, between Petford and Boonmoo, 224 Jan. 1931, Hubbard et Winders 6864 A; holotype: ? iso: BRI. Fide Reynolds (1993).

## RFK Code

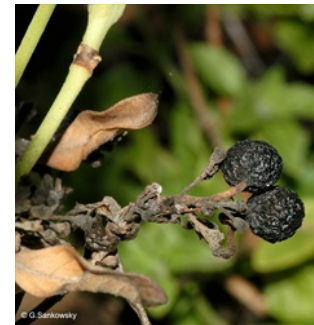
3374



Leaves and Flowers. © A. Ford & F. Goulter



Fruit. © G. Sankowsky



Mature fruit. © G. Sankowsky



Leaves. © G. Sankowsky



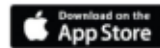
Scale bar 10mm. © CSIRO



10th leaf stage. © CSIRO



Cotyledon stage, epigeal germination. © CSIRO



Web edition hosted at <https://apps.lucidcentral.org/rainforest>