

## *Quintinia fawkneri* F.Muell.

### Family:

Paracryphiaceae

Mueller, F.J.H. von (1868) *Fragmenta Phytographiae Australiae* 6: 92. Type: In silvis montium apud sinum Botanicorum, Dellekeri

### Common name:

Climbing Quintinia; Quintinia, Climbing

### Stem

Vine stem diameters to 5 cm recorded. Stems much branched, tightly attached to the tree trunk. Most vascular rays are narrow and scarcely visible to the naked eye but there are a few vascular rays which are much wider than the rest and extend almost from the pith to the periphery of the stem.

### Leaves

Leafy twigs densely clothed in scales. Leaf blades rather thick and leathery, about 15-50 x 10-30 mm, margins recurved, petioles about 2-9 mm long. Underside of the leaf blade completely covered by numerous white, brown or orange orbicular scales. Venation difficult to distinguish, about 6-8 veins on each side of the midrib.

### Fruit

Capsules about 4 x 3 mm with 5 longitudinal ribs.

### Seedlings

Features not available.

### Distribution and Ecology

Endemic to NEQ. Altitudinal range from 700-1300 m. Grows in upland and mountain rain forest.

### Natural History & Notes

An easily grown climber that can be trained over a fence or wall. Flowers are white in large bunches.

### RFK Code

2059



Flowers [not vouchered]. © G.

Sankowsky



Inflorescences and flowers. © B.

Gray

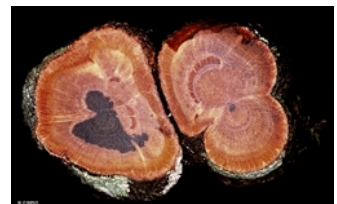


Inflorescences with immature fruit, and leaves [not vouchered]. © G.

Sankowsky



Scale bar 10mm. © CSIRO



Vine stem transverse section. ©

CSIRO



Web edition hosted at <https://apps.lucidcentral.org/rainforest>