

# *Rhaphidophora hayi* P.C.Boyce & Bogner

Family:  
Araceae

Boyce, P.C. & Bogner, J. (2000) *Gard. Bull. Singapore* 52: 91. Type: Queensland, Cooroo Lands, North Johnstone River, New Guinea, 1965, Webb & Tracey 7066; holo: BRI.

## Stem

A slender vine not exceeding a stem diameter of 2 cm. Adventitious roots often present. Freshly cut stems emit an odour resembling that of fish.

## Leaves

Leaf blades about 10-23 x 6-20 cm, distichous, closely appressed to the trunk of the supporting tree or other substrate. Leaf blade apices asymmetrical, very abruptly acuminate. Petioles about 0.5-2.5 cm long. Small dark 'oil dots' visible with a lens, two sizes are apparent, the larger ones being somewhat elongated and the outlines blurred. Thin, papery stipules or ligules attached to each side of the petioles and extend around the stem. However, these ligules soon wither and are shed leaving a distinct scar on the petiole and stem.

## Flowers

Inflorescence terminal on short lateral shoots. Peduncle about 7 cm long. Spathe about 7-8 x 3 cm, orange or apricot in colour on the inner surface. Spadix about 4.5-5 x 1.5 cm on a stalk about 1 cm long. Staminal filaments about 2 mm long, anthers about 1.5 mm long. Anther tips +/- level with the top of the ovary. Pollen cream or white. Ovary about 3-3.5 mm long. Stigma dark brown or black, +/- sessile. Ovules numerous in each locule. It is difficult to ascertain how many stamens are associated with each flower because of the closely packed nature of the inflorescence.

## Fruit

Features not available.

## Seedlings

Features not available.

## Distribution and Ecology

Occurs in NEQ. Altitudinal range from near sea level to 250 m. Grows in well developed very wet lowland rain forest. Also occurs in New Guinea.

## Synonyms

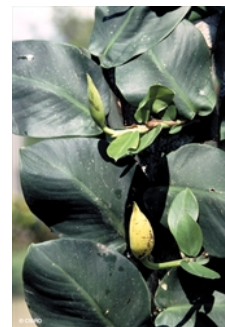
*Rhaphidophora pachyphylla* K.Krause, *Bot. Jahrb. Syst.* 49: 92(1913), Type: Papua New Guinea: Madang Province, Wobbe, Schlecter 16436 (16463?) (B!, holo).

## RFK Code

2583



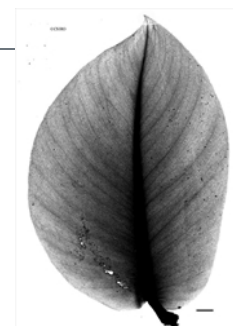
Inflorescences. © CSIRO



Leaves and inflorescences. © CSIRO



Habit and leaves. CC-BY J.L. Dowe



Scale bar 10mm. © CSIRO



Web edition hosted at <https://apps.lucidcentral.org/rainforest>