

Sphaerantia discolor Peter G. Wilson & B. Hyland

Family:
Myrtaceae

Wilson, Peter G. & Hyland, B.P.M. (1988) *Telopea* 3(2): 262. Type: QUEENSLAND: State Forest Reserve 756, East Mc Ness Logging Area, 17 deg 40 S 145 deg 30 E, Hyland 3565 RFK, 13.9.1977 (QRS). ISOTYPE: NSW.

Common name:
Tully Penda

Stem

Pale brown, brittle stripes in the blaze.

Leaves

Oil dots visible with a lens or just visible to the naked eye. Leaf blades about 9.5-14 x 3-5 cm. Leafy twigs often in whorls. Young leaves purplish red.

Flowers

Inflorescence up to 12 cm long. Hypanthium about 4-5 mm broad, clothed in a fine, short indumentum. Sepals semicircular to oblong, about 1.5-2.5 x 2-3.5 mm, clothed in a fine, short indumentum. Petals orbicular, about 3-3.5 mm diam., oil glands absent or obscure. Stamens numerous, about 9-15 in each fascicle, filaments about 0.5-2.5 mm long, bearing short spreading hairs for most of their length. Ovary clothed in white hairs, ovules up to 35 per locule. Style about 3-5 mm long.

Fruit

Fruits about 10-14 mm diam. Seeds irregularly ovoid, about 5-6 mm long.

Seedlings

Cotyledons lobed, butterfly-like, about 12-15 x 15-20 mm, apex broadly emarginate, base rounded or cordate. Oil dots numerous. At the tenth leaf stage: leaf blade elliptic, apex acute or slightly acuminate, base cuneate, glabrous, midrib raised on the upper surface; oil dots scattered, small, visible with a lens. Cataphylls present among the true leaves. Seed germination time 11 to 21 days.

Distribution and Ecology

Endemic to NEQ, restricted to the Russell and Johnstone River catchments west of Innisfail, Wright Creek near Edmonton and creeks in the Whyanbeel area. Altitudinal range from 150-300 m. Grows in well developed lowland rain forest often close to creeks.

RFK Code

93



Flowers [not vouchered]. © G. Sankowsky



Fruit © G. Sankowsky



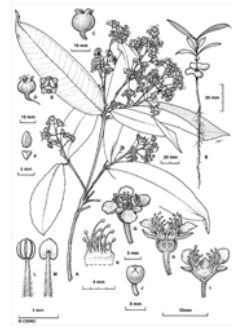
Leaves and fruit. © G. Sankowsky



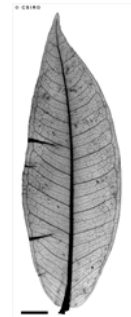
Fruit © A. Ford



Leaves [not vouchered]. © G. Sankowsky



Habit, flower & bud, anther, stamens, fruit, seed, seedling. © CSIRO



Scale bar 10mm. © CSIRO



10th leaf stage. © CSIRO



Cotyledon stage, epigeal germination. © CSIRO

