

# *Syzygium resa* (B.Hyland) Craven & Biffin

**Family:**

**Myrtaceae**

Craven, L.A., Biffin, E. & Ashton, P.S. (2006) *Blumea* 51(1): 139.

**Common name:**

Red Eungella Gum; Satinash, Red Eungella; Watergum; Red Eungella Satinash

**Stem**

One of the larger trees encountered, particularly in mountain rain forests. Dead bark usually reddish or orange-brown when cut.

**Leaves**

Leaf blades about 5-11.1 x 1.4-5.2 cm. Midrib depressed on the upper surface and petiole grooved on the upper surface. Oil dots numerous and conspicuous.

**Flowers**

Inflorescence exceeding the leaves, bracts deciduous, absent at anthesis. Calyx tube (hypanthium) tapering gradually into the pedicel, calyx tube (hypanthium) + pedicel about 3.2-5.5 mm long, calyx tube (hypanthium) about 1.5-2.8 mm diam., calyx lobes rounded, small and inconspicuous, about 0.1-0.2 mm long. Petals +/- cohering by their inflexed tips, irregular in shape, about 0.9 x 0.9 mm, oil dots comparatively large, but often difficult to discern, up to five per petal. Staminal filaments variable, outer about 1-2.4 mm long, anthers wider than long, about 0.2-0.3 x 0.3-0.4 mm, gland small, terminal. Placentas confined to the apex of each locule. Ovules pendulous, about 10-20 per locule. Style about 0.6-1.4 mm long, approximating the top of the calyx tube (hypanthium), but substantially below the anthers.

**Fruit**

Fruits globular or depressed globular, flattened or shallowly excavated at the apex, attaining about 12-16 mm diam., calyx lobes not discernible on mature fruit. Seed attaining about 9-13 mm diam. Cotyledons with a conspicuous, hard, dark, tanniferous, branching inclusion ramifying through most of the cotyledonary tissue, cotyledonary stipules present.

**Seedlings**

Cataphylls about 1-3 pairs. At the tenth leaf stage: seedling completely glabrous, leaf blade elliptic, apex acute, base cuneate to attenuate; oil dots numerous, clearly visible with a lens. Seed germination time 35 days.

**Distribution and Ecology**

Endemic to Queensland, occurs in NEQ and CEQ. Altitudinal range from 200-1300 m. Grows in well developed rain forest on a variety of sites but is more common in upland and mountain rain forest.

**Natural History & Notes**

This species produces millable logs and the sawn timber is marketed as Red Eungella Satinash, useful, but not popular, structural timber. Wood specific gravity 0.77-0.82. Hyland (1983).

**Synonyms**

**Acmena resa** B.Hyland, *Australian Journal of Botany Supplementary Series* 9: 16(1983), Type: B. Hyland 5760: near National Park Reserve 353 Mt Hypipamee, 12.i.1972 (holotypus QRS).

**RFK Code**

147



Fruit, two views and cross section.

© W. T. Cooper



Habit, flower & bud, anther, fruit, seedling. © CSIRO



Scale bar 10mm. © CSIRO



10th leaf stage. © CSIRO



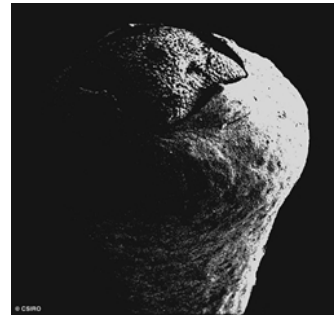
10th leaf stage. © CSIRO



Cotyledon and 1st leaf stage,  
hypogeal germination. © CSIRO



Flower, calyx rim & a few stamens  
& style. © CSIRO



Flower bud, side view. © CSIRO



Web edition hosted at <https://apps.lucidcentral.org/rainforest>