

Tetrastigma crenatum Jackes

Family:
Vitaceae

Jackes, B.R. (1989) *Austrobaileya* 3(1): 150. Type: Queensland, Cardstone via Tully, 17 45 S, 145 37 E, 3 April 1984. E.M.Jackes; holo: BRI; iso: CANB, K, L, NSW.

Stem

Vine stem diameters to 10 cm recorded. Peg like lenticels on older stems.

Leaves

Leaflet blades about 5.5-13 x 2.5-6.5 cm. Lateral leaflet stalks about 0.7-3 cm long. 'Oil dots' small, somewhat streaky. Lateral veins raised on the upper surface, about 6-10 on each side of the midrib. Middle leaflet larger than the lateral leaflets. Leaflet margins with about 4-8 teeth on each side. Stipules caducous. Tendrils 2-branched.

Flowers

Female flowers: Inflorescence a glabrous, panicle of umbels up to 14 cm long. Calyx cup-shaped, very short, without any obvious lobes. Petals reflexed, ovate, about 1.5 x 1 mm, apex hooked or hooded. Staminodes four, about 1 mm long. Ovary about 0.7 mm high. Stigma shaped like a mushroom, about 1 mm diam. Ovules two per locule.

Fruit

Fruits +/- globose, about 8-11 x 7-10 mm, black when fully ripe but red before maturity. Seeds elliptic, about 6-9 x 6-7 mm. Embryo about 2-4 mm long. Cotyledons about 1-1.6 mm long, wider than the slightly curved radicle.

Seedlings

Cotyledons ovate, about 15-18 x 7.5 mm, apex rounded, base truncate to abruptly attenuate. Margins slightly sinuate, 'Oil dots' elongate. Intramarginal vein usually visible towards the apex. First leaf blade elliptic, margin toothed with three to six teeth on each side. At the tenth leaf stage: seedling glabrous, leaflet blades ovate, obovate to elliptic, apex acuminate, base obtuse (oblique on lateral leaflets). Middle leaflet larger than the lateral leaflets. Margins toothed with four to eight teeth on each side, midrib raised on the upper surface. Short, streaky oil dots visible with a lens. Stipules broad-based, about 1.5-2 mm long. Tendrils leaf-opposed, two-branched. Stem longitudinally striated. Seed germination time to 43 days.

Distribution and Ecology

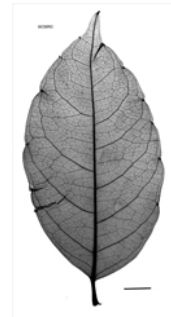
Endemic to NEQ. Altitudinal range from near sea level to 150 m. Grows in well developed lowland rain forest.

RFK Code

2226



Flowers. © Barry Jago



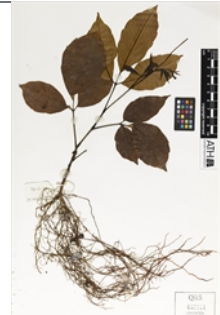
Scale bar 10mm. © CSIRO



Herbarium specimen, leaves, fruit and stem cross-section. © CSIRO



Cotyledon stage, epigeal germination. © CSIRO



10th leaf stage. © CSIRO



Web edition hosted at <https://apps.lucidcentral.org/rainforest>