

## *Timonius* sp. Claudie River (B.Hyland 21096V)

**Family:**

**Rubiaceae**

Provisional HISPID phrase name.

**Stem**

Vine stem diameters to 4 cm recorded. Sub-rhytidome layer and blaze almost orange in colour.

**Leaves**

Leaf blades about 3-7 x 1.5-3 cm, petioles about 0.6-1.8 cm long, clothed in prostrate hairs. Upper and lower surfaces of the leaf blade clothed in pale +/- prostrate hairs. Domatia are tufts of hair. Stipules narrowly triangular, about 3-4 mm long, densely hairy. Backward-pointing branches assist in climbing.

**Flowers**

Flower stalks (peduncles) about 15 mm long. Bracts at the base of each flower about 2.5 x 0.3 mm. Calyx tube (including the hypanthium) about 2.5 mm long, outer surface clothed in white, prostrate hairs. Calyx lobes about 0.7 mm long. Corolla tube about 2.5 mm long (?), outer surface clothed in white, prostrate hairs. Anthers sessile. Style about 3 mm long. Stigma 4-lobed.

**Fruit**

Fruits borne on long slender peduncles about 18-30 mm long. Each fruit turbinate, about 7 x 5 mm with a pair of bracts at the base of the fruit. Calyx lobes 4, persistent at the apex of the fruit. Fruit surface and calyx lobes clothed in pale prostrate hairs. Endocarp hard, difficult to cut. Seeds about 7-8 x 1 mm. Endosperm not copious. Embryo about 6-7 x 0.8 mm. Cotyledons narrow, thinner than the radicle.

**Seedlings**

Features not available.

**Distribution and Ecology**

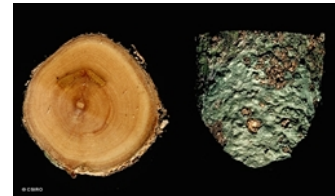
Occurs in CYP. Known only from a few collections made in the Claudie River area. Altitudinal range not known, specimens collected at an altitude of 40 m. Grows in gallery forest or lowland rain forest.

**RFK Code**

2120



Scale bar 10mm. © CSIRO



Vine stem bark and vine stem transverse section. © CSIRO

Copyright © CSIRO 2020, all rights reserved.



Web edition hosted at <https://apps.lucidcentral.org/rainforest>