

Tribulopsis homalococca var. *alifer* (Domin) R.M.Barker

Family:

Zygophyllaceae

Barker, R.M. (1998) *Journal of the Adelaide Botanic Gardens* 18(2): 92.

Stem

Fleshy prostrate annual herb to 30 cm tall. Stems pinkish, striate, appressed pubescent.

Leaves

Leaflets appressed pubescent below, glabrous above, 1-3 veins from leaflet base; leaflet blades 5-12 x 4-6 mm, margins ciliate, leaflet stalks 0.5-0.75 mm long. Venation difficult to discern.

Flowers

Flower buds rotund. Flowers 11-14 mm diam. Pedicels 11-15 mm long. Sepals about 4 x 2 mm, outer surface clothed in hairs. Petals 6-7 x 4 mm. Anthers about 1 mm long, filaments about 1 mm long. Ovary + style about 2 mm long, ovary longitudinally ribbed (5). Extrastaminal nectariferous disc with 5 lobes. Ovules one per locule. Stigma 5-ribbed and papillate.

Fruit

Fruit a glabrous schizocarp topped by a persistent style and stigma, fruitlets each with a basal semicircular wing, 2.5-3 mm diameter with longitudinal wings on the locules containing developed seeds. Seeds 4-5 mm long. Embryo about 2 mm long, consisting mainly of cotyledons.

Seedlings

Features not available.

Distribution and Ecology

Occurs in the Chillagoe area of NEQ. Altitudinal range from 346-513 m. Grows in deciduous vine thicket.

Synonyms

Tribulus homalococcus var. *alifer* Domin, *Bibliotheca Botanica* 89(4): 834(1921), Type: Bei Chillagoe (DOMIN II. 1910).

RFK Code

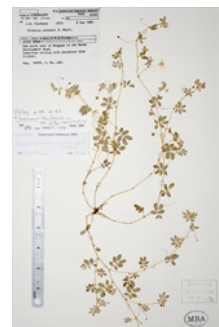
4105



Flower. © G. Sankowsky



Leaves and flowers. © CSIRO



Herbarium specimen. © DERM

Copyright © CSIRO 2020, all rights reserved.



Web edition hosted at <https://apps.lucidcentral.org/rainforest>