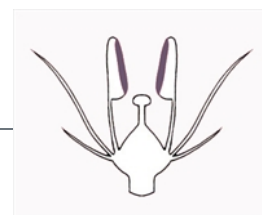


Anthers opening

The direction of anther dehiscence.

Copyright © CSIRO 2020, all rights reserved.



FL126 introrse Anthers in the mature bud with their apparent lines of dehiscence facing inwards, i.e. adaxial.



FL127 extrorse Anthers in the mature bud with their apparent lines of dehiscence facing outwards, i.e. abaxial.



FL128 opening laterally Anthers in the mature bud with their apparent lines of dehiscence facing tangentially.



Web edition hosted at <https://apps.lucidcentral.org/rainforest>