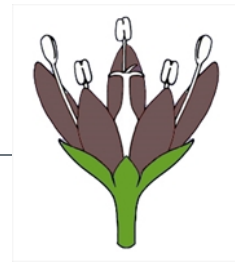


Flowers perianth form

Flowers often produce both sepals and petals, which differ from one another in colour, texture and shape. However, they may be similar to one another, or one or both may be absent.

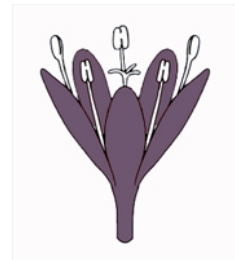
Copyright © CSIRO 2020, all rights reserved.



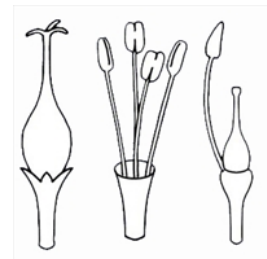
FL21 with distinct sepals and petals



FL22 with two (or more) similar perianth whorls



FL23 with only one perianth whorl



FL24 with no perianth



Web edition hosted at <https://apps.lucidcentral.org/rainforest>