

Fact Sheet

Barychelidae: Barychelinae

Total length

Small to large (2–30mm).

Distribution

Northern Territory, Western Australia, Queensland, New South Wales, Victoria, South Australia, New Guinea.

Habitat

Tropical rainforest, swamp, temperate rainforest, open eucalyptus forest, semi-arid areas, desert.

Spinnerets

Two or four. PLS segments unequal in length; **apical segment domed or triangular**. PMS present or absent.

Cephalothorax

Caput of females gently raised, higher than thoracic portion; fovea of females more or less straight, deeply procurved or U-shaped.

Eyes eight eyes; group about 0.3–0.7 of head-width; three rows; rows equal in width; on tubercle.

Chelicerae fangs longitudinal; stridulatory lyra absent or between maxillae and chelicerae; retromargin without teeth; middle row of teeth distinct; intercheliceral tumescence in male absent; rastellum absent or with weak or thick spines, sometimes on a distinct mound.

Maxillae longer than wide; anterior lobe small, indistinct; serrula absent; cuspules in female absent, few, or numerous and densely packed; or clustered at anterior inner corner.

Labium wider than long; cuspules in female absent, few or numerous and densely packed; in broad group.

Sternum **shield-shaped**; with three pairs of sigilla.

Legs

Preening combs on metatarsi absent; tarsi basally with several small clavate and many distally filiform trichobothria.

Claws **two**; paired claws in female with one row of teeth centrally or bare, rarely with two rows of teeth; males commonly with two rows of teeth on claws; **with dense tufts**; tufts movable and separate.

Males usually with coupling spur on tibia I.

Scopula on metatarsi and tarsi I-IV.

Male Palp

Cymbium with scopula. Bulb pyriform with or without apophysis.

Genera included

Aureocrypta, *Idiommata*, *Mandjelia*, *Moruga*, *Ozicrypta*, *Seqocrypta*, *Synothele*, *Trittame*, *Tungari*, *Zophorame*.



Idiommata sp. - Qunikan Country, Queensland.

Photographer: Robert Whyte



Idiommata sp. - Lake Mungo National Park, New South Wales.

Photographer: Stephen Mahoney



Mandjelia sp. female with egg sac - Quinkan Country, Queensland.

Photographer: Robert Whyte



Idiommata sp.



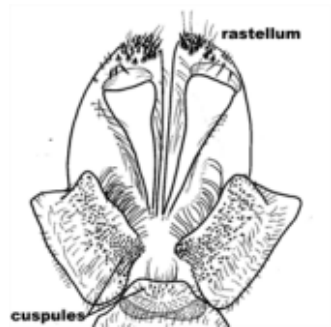
Aureocrypta sp.



Idiommata sp. female, dorsal habitus.



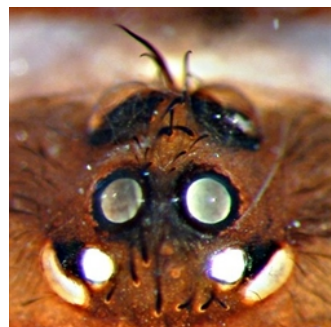
Distribution map.



Zophorame sp. - maxillae, labium, chelicerae and rastellum.



No serrula on maxillae.



Eyes in three rows.



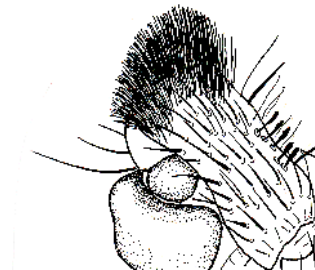
Idiommata sp. legs - showing scopula on metatarsi and tarsi, and claw tufts.



One burrow can have two doors.



Some trapdoor spiders have floppy doors on their burrows.



Barychelinae - male cymbium showing scopula.

