

# Fact Sheet

---

## Hexathelidae: Hexathelinae: Plesiothele

---

### Total length

Large (8–30mm) (Figs 1-2).

### Distribution

Tasmania (Fig. 3).

### Habitat

Temperate rainforest, open eucalyptus forest.

### Spinnerets

(Figs 4-5) **Six**. PLS segments equal in length; **apical segment digitiform**. **ALS larger than PMS**.

### Cephalothorax

Caput of females raised higher than thoracic portion; fovea of females more or less straight or recurved.

Eyes eight eyes; group tiny, about 0.3 of headwidth; two rows; rows equal in width; on tubercle.

Chelicerae fangs longitudinal; retromargin without teeth; middle row of teeth distinct; intercheliceral tumescence in male absent; rastellum absent.

Maxillae longer than wide; anterior lobe small, indistinct; serrula a wide band; cusps in female clustered at anterior inner corner.

Labium about as wide as long; **cusps in female few, 10 or less**; in broad group.

Sternum (Figs 2, 6) shield-shaped; with three pairs of sigilla.

### Legs

Preening combs on metatarsi absent; tarsi with filiform trichobothria.

Claws **three; paired claws with one row of teeth centrally**; third claw in female bare; tufts absent.

Scopula absent.

### Genera included

*Plesiothele*.

Copyright © 2022. All rights reserved.



Fig. 1. *Plesiothele fentoni*, female, dorsal.

Photographer: Niall Doran



Fig. 2. *Plesiothele fentoni*, female, ventral view.

Photographer: Niall Doran



Fig. 3. Distribution map.



Fig. 4. *Plesiothele fentoni* female, spinnerets showing large outer pair (PMS).

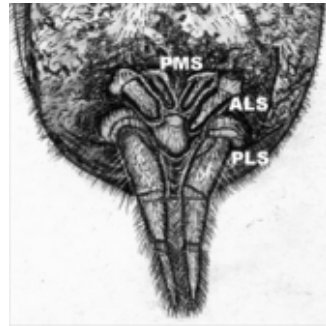


Fig. 5. *Plesiothele fentoni* spinnerets, showing ALS larger than PMS.



Fig. 6. *Plesiothele fentoni*, female venter.

