

Microstigmatidae: Ixamatinae

Total length

Medium to large (4–30mm) (Fig. 1).

Distribution

Queensland, New South Wales (Fig. 2).

Habitat

Tropical rainforest, temperate rainforest, open eucalyptus forest.

Spinnerets

Four. PLS segments unequal in length; **apical segment digitiform**.

Cephalothorax

Caput of females gently raised, higher than thoracic portion; fovea of females more or less straight.

Eyes eight eyes; group tiny, about 0.3 of headwidth; two rows; rows equal in width; on tubercle.

Chelicerae fangs longitudinal; retromargin without teeth; middle row of teeth distinct;

intercheliceral tumescence in males absent; rastellum absent.

Maxillae longer than wide; anterior lobe absent; serrula absent or a wide band; cuspules numerous, dense, clustered at anterior inner corner (Fig. 3).

Labium wider than long; **cuspules absent**.

Sternum shield-shaped; with three pairs of sigilla.

Legs

Preening combs on metatarsi absent; **tarsal organ a raised rod** (Fig. 4 inset); tarsi with filiform trichobothria for length; cuticle finely pustulose.

Claws **three; paired claws in female with two rows of teeth** (Figs 5-6); third claw in female bare; tufts absent.

Scopula absent.

Male Palp

Cymbium ascopulate, with or without spines.

Genera included

Ixamatus, *Xamiatus*.



Fig. 1. *Xamiatus rubrifrons*, female dorsal habitus.



Fig. 2. Distribution map.



Fig. 3. *Ixamatus* sp. female maxillae, showing cuspules grouped in anterior corner

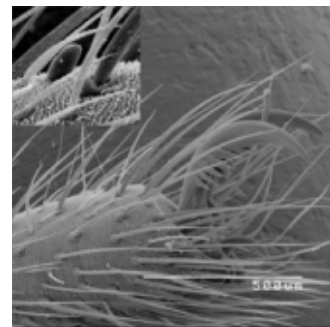


Fig. 4. *Ixamatus* sp., tarsus showing tarsal rod (see inset) and claws.

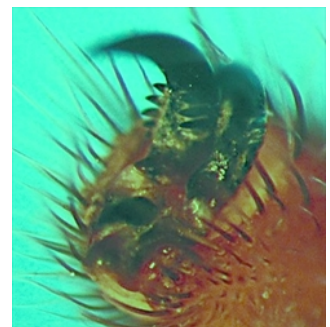


Fig. 5. *Ixamatus barina* female claws, showing two rows of teeth ventrally.



Fig. 6. *Ixamatus* sp. female claws, showing row of teeth on each edge of paired claws.



Web edition hosted at <https://apps.lucidcentral.org/australian-spiders>