

Migidae: Miginae

Distribution

Western Australia, Queensland, New South Wales, Victoria, South Australia, Tasmania, Norfolk Island, New Zealand (Fig. 5).

Habitat

Tropical rainforest, temperate rainforest, open eucalyptus forest.

Spinnerets

Four. PLS segments unequal in length; **apical segment domed or triangular**.

Cephalothorax

(Fig. 6) Caput of females gently raised, higher than thoracic portion; **fovea of females recurved**, T- or M-shaped.

Eyes eight eyes; **group about 0.5–0.7 of head-width**; two rows; rows equal in width, or front row wider; not on tubercle.

Chelicerae fangs longitudinal; profile, **outer surface with two distinct longitudinal keels** (Fig. 7); **retromargin with three or more teeth**; middle row of teeth distinct; intercheliceral tumescence in male present; rastellum absent.

Maxillae longer than wide; anterior lobe and serrula absent; cuspules absent.

Labium wider than long; cuspules absent.

Sternum with only one pair of sigilla posteriorly.

Legs

Tibiae and metatarsi I of females tapered, cylindrical or dorso-ventrally flattened (Fig. 8); preening combs on metatarsi absent; tarsi with filiform trichobothria.

Claws. **three; paired claws with one row of teeth** on the inner margin; third claw bare; tufts absent.

Scopula. In females, absent on legs I, II, entire on tarsus IV.

Male Palp

Cymbium with spines. Embolus originates straight off bulb or reflexes back close to bulb.

Genera included

Bertmainius, *Migas*, *Moggridgea*.

Copyright © 2022. All rights reserved.



Fig. 1. *Migas* sp. female - Flinders Island, South Australia.

Photographer: R. Whyte



Fig. 2. *Migas* sp. female - Flinders Island, South Australia.

Photographer: R. Whyte



Fig. 3. *Migas* sp. female - Flinders Island, South Australia.

Photographer: R. Whyte



Fig. 4. Miginae adult with nest.



Fig. 5. Distribution map.



Fig. 6. *Migas* sp. dorsal cephalothorax.

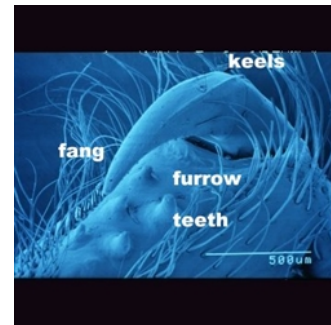


Fig. 7. *Migas* sp. chelicera, with detail of fang, furrow and keel.



Fig. 8. *Migas* sp. female, dorsal aspect of tibia to tarsus I.

