

Theraphosidae: Selenocosmiinae

Total length

Large to extremely large (8–30mm or more) (Figs 1-6).

Distribution

Northern Territory, Western Australia, Queensland, New South Wales, Victoria, South Australia, New Guinea (Fig. 7).

Habitat

Tropical rainforest, temperate rainforest, open eucalyptus forest, semi-arid areas, desert, intertidal or littoral.

Spinnerets

four. PLS segments equal in length; **apical segment digitiform**.

Cephalothorax

Caput of females gently raised, higher than thoracic portion; fovea more or less straight.

Eyes eight eyes; group tiny, about 0.3 of headwidth; two rows; rows equal in width; on tubercle.

Chelicerae fangs longitudinal; stridulatory lyra between maxillae and chelicerae (Figs 8-9) or absent; retromargin without teeth; middle row of teeth distinct; intercheliceral tumescence in male absent; rastellum absent.

Maxillae (Figs 8-9) longer than wide; anterior lobe well defined, conical; serrula absent; **cuspules numerous, dense**, clustered at anterior inner corner.

Labium (Fig. 9) about as wide as long. Cuspules in female numerous, dense; in broad group. Sternum shield-shaped; with three pairs of sigilla.

Legs

Preening combs on metatarsi absent; **tarsi with large clavate trichobothria for length**.

Claws **two**; paired claws in female bare; **with dense tufts**.

Scopula **In females, dense on all pedal tarsi and metatarsi**.

Male Palp

Cymbium with scopula.

Genera included

Coremiocnemis, *Phlogiellus*, *Phlogius*, *Selenotholus*, *Selenotypus*.

Copyright © 2022. All rights reserved.



Fig. 1. *Selenotypus* sp.



Fig. 2. *Coremiocnemis tropix* habitus - Surprise Creek, Kuranda, Queensland.

Photographer: Nick Monaghan



Fig. 3. *Coremiocnemis tropix* detail of carapace - Surprise Creek, Kuranda, Queensland.

Photographer: Nick Monaghan



Fig. 4. *Coremiocnemis tropix* chelicerae - Surprise Creek, Kuranda, Queensland.

Photographer: Nick Monaghan



Fig. 5. *Phlogius crassipes* female showing characteristic thicker front legs.

Photographer: QM



Fig. 6. *Selenotypus* sp.



Fig. 7. Distribution map.

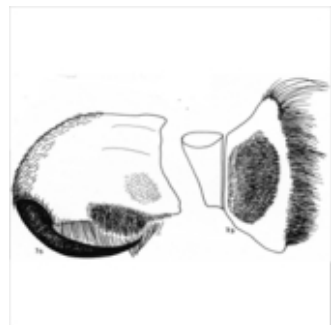
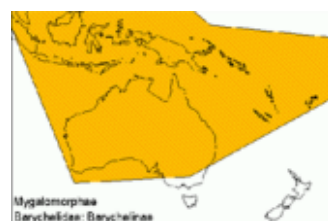


Fig. 8. *Phlogius crassipes* female showing cheliceral & maxillary lyra.



Fig. 9. Theraphosidae maxillae and labium.



Distribution map.



Web edition hosted at <https://apps.lucidcentral.org/australian-spiders>