

WATTLE

Acacias of Australia

Acacia cuthbertsonii Luehm. subsp. *cuthbertsonii*



Source: WorldWideWattle ver. 2.
Published at: www.worldwidewattle.com
B.R. Maslin



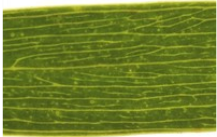
Source: WorldWideWattle ver. 2.
Published at: www.worldwidewattle.com
Kym Brennan



cuthbertsonii Virgin Springs, Carnarvon Range,
WA
Mary Hancock



Source: WorldWideWattle ver. 2.
Published at: www.worldwidewattle.com
B.R. Maslin



Source: WorldWideWattle ver. 2.
Published at: www.worldwidewattle.com
Kym Brennan



cuthbertsonii Virgin Springs, Carnarvon Range,
WA
Mary Hancock



Source: WorldWideWattle ver. 2.
Published at: www.worldwidewattle.com
B.R. Maslin



Source: WorldWideWattle ver. 2.
Published at: www.worldwidewattle.com
See illustration.



Source: WorldWideWattle ver. 2.
Published at: www.worldwidewattle.com
See illustration.



Acacia cuthbertsonii subsp. *cuthbertsonii*
occurrence map.
Occurrence map generated via Atlas of Living
Australia (<https://www.ala.org.au>).

Family

Fabaceae

Distribution

Widespread from inland of Shark Bay and Kalbarri, W.A., eastward to S of Tennant Creek, central N.T.

Description

Phyllodes **elliptic** to narrowly **elliptic** or **linear-elliptic**, flat, 3–8.5 cm long, 3–10 (–20) mm wide, $l:w = 2.5\text{--}14$; central **nerve** the most evident; **lateral** nerves when present longitudinally orientated and sometimes sparingly to moderately **anastomosing**. Seeds broadly **elliptic**, 7.5 mm long.

Habitat

Commonly in stony sand along creeks and drainage lines, often on hillocks but also on plains, mostly with mulga and spinifex.

Specimens

W.A.: Wiluna Rd, 80 km W of Carnegie, *U.Johnson 41* (K, NSW, PERTH); Mt James Stn, 53 km N of Landor HS on track to Mt Augustus Stn, *B.R.Maslin 5189a* (PERTH); 30.5 km N of Gordon Downs Stn, *R.A.Perry & M.Lazarides 2439* (CANB *n.v.*, NSW, PERTH). N.T.: 77 km N of Aileron, Stuart Hwy, *J.R.Maconochie 976* (DNA, NSW, PERTH); 270 km N Alice Springs, 16 km S Barrow Ck, *J.R.Maconochie 2502* (CANB, DNA, PERTH).

Notes

There is considerable variation in phyllode width and shape with very narrow phyllode forms approaching subsp. *linearis* whose phyllodes are much longer in relation to their width.

Acacia levata was formerly confused with this subspecies.

FOA Reference

Data derived from *Flora of Australia* Volumes 11A (2001), 11B (2001) and 12 (1998), products of ABRS, ©Commonwealth of Australia

Author

R.S.Cowan, B.R.Maslin

This identification key and fact sheets are available as a mobile application:



Australian Government
Department of the Environment and Energy



Department of
Biodiversity, Conservation
and Attractions
Western Australian Herbarium



Australian
Biological
Resources
Study



URL: <https://keys.lucidcentral.org/keys/v3/wattle>
Copyright 2018. All rights reserved.