

WATTLE

Acacias of Australia

Acacia graniticola Maslin



Source: WorldWideWattle ver. 2.
Published at: www.worldwidewattle.com
B.R. Maslin



Source: WorldWideWattle ver. 2.
Published at: www.worldwidewattle.com
B.R. Maslin



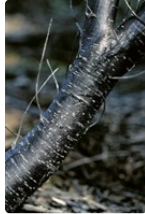
Source: WorldWideWattle ver. 2.
Published at: www.worldwidewattle.com
B.R. Maslin



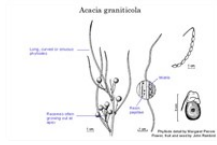
Source: WorldWideWattle ver. 2.
Published at: www.worldwidewattle.com
B.R. Maslin



Source: WorldWideWattle ver. 2.
Published at: www.worldwidewattle.com
B.R. Maslin



Source: WorldWideWattle ver. 2.
Published at: www.worldwidewattle.com
B.R. Maslin



Source: WorldWideWattle ver. 2.
Published at: www.worldwidewattle.com
See illustration.



Acacia graniticola occurrence map.
Occurrence map generated via Atlas of Living
Australia (<https://www.ala.org.au>).

Family

Fabaceae

Distribution

Occurs from near Kalannie, Mt Churchman (c. 195 km due NW of Southern Cross) and Walyahmoning Rock (c. 85 km due NW of Southern Cross) S to Mt Walker (c. 35 km E of Narembeen), south-western W.A.

Description

Intricate spreading **glabrous shrub** 1–3 m high. Young **branchlets**, phyllodes and peduncles with **scattered**, dark brown, \pm circular, flat, resin **papillae**. **Branchlets** slightly to moderately **flexuose**. Stipule bases **persistent**, **indurate**. Phyllodes **sessile**, not easily separated from **branchlets**, **linear**, **curved** to **sinuous**, flat to subquadrangular, mostly (6-) 9–15 (-28) cm long, 1–3 mm wide, **acute**, \pm **coriaceous**, 4- or 5-nerved in all, with 1 **nerve** per face when flat, with nerves sparingly **tuberculate**; **gland** (2-) 5–8 mm above base, sometimes absent. Inflorescences 7–12-headed racemes, sometimes growing out with subsequent inflorescences appearing **simple**; **raceme axes** 1–5.5 cm long; peduncles 2 or 3 per **node** along **raceme axis** or in **phyllode** axils, 6–25 mm long, with **bract** 1–2 mm long near or above middle, **ebracteate** at base; heads **globular** to widely **ellipsoid**, 4.5–5 mm diam., 35–40-flowered, golden. Flowers 5-merous; sepals free. Pods **linear**, to 8 cm long, 2.5–4 mm wide, **chartaceous** to thinly **coriaceous**, **glabrous**. Seeds **longitudinal**, broadly **elliptic**, 2.5–3.5 mm long, semi-glossy, grey-brown, sometimes **mottled**; **aril** thick, folded.

Habitat

Grows in sand, sandy clay or loam on soil aprons on and at the base of granite outcrops, sometimes in scrub or shrubland in semi-arid areas.

Specimens

W.A.: near summit of Mt Churchman, *B.J.Conn 2280* (MEL, NSW, PERTH, TL); Muntadgin Rock, c. 3.2 km E of Muntadgin, *B.R.Maslin 1819* (AD, BRI, NSW, PERTH); Walyahmoning Rock, c. 60 km NW of Bullfinch, *K.Newbey 9558* (MO, PERTH); Roe Dam just N of Mt Walker, *J.G. & M.H.Simmons 1311* (PERTH).

Notes

Most closely allied to *A. dentifera* which has straight branchlets, generally wider phyllodes with an obvious pulvinus, and less persistent, shorter bracts on the peduncles. Also related to *A. tuberculata*.

FOA Reference

Data derived from *Flora of Australia* Volumes 11A (2001), 11B (2001) and 12 (1998), products of ABRS, ©Commonwealth of Australia

Author

B.R.Maslin

Minor edits by J.Rogers

This identification key and fact sheets are available as a mobile application:



Australian Government
Department of the Environment and Energy



Department of
Biodiversity, Conservation
and Attractions
Western Australian Herbarium



Australian
Biological
Resources
Study



URL: <https://keys.lucidcentral.org/keys/v3/wattle>
Copyright 2018. All rights reserved.